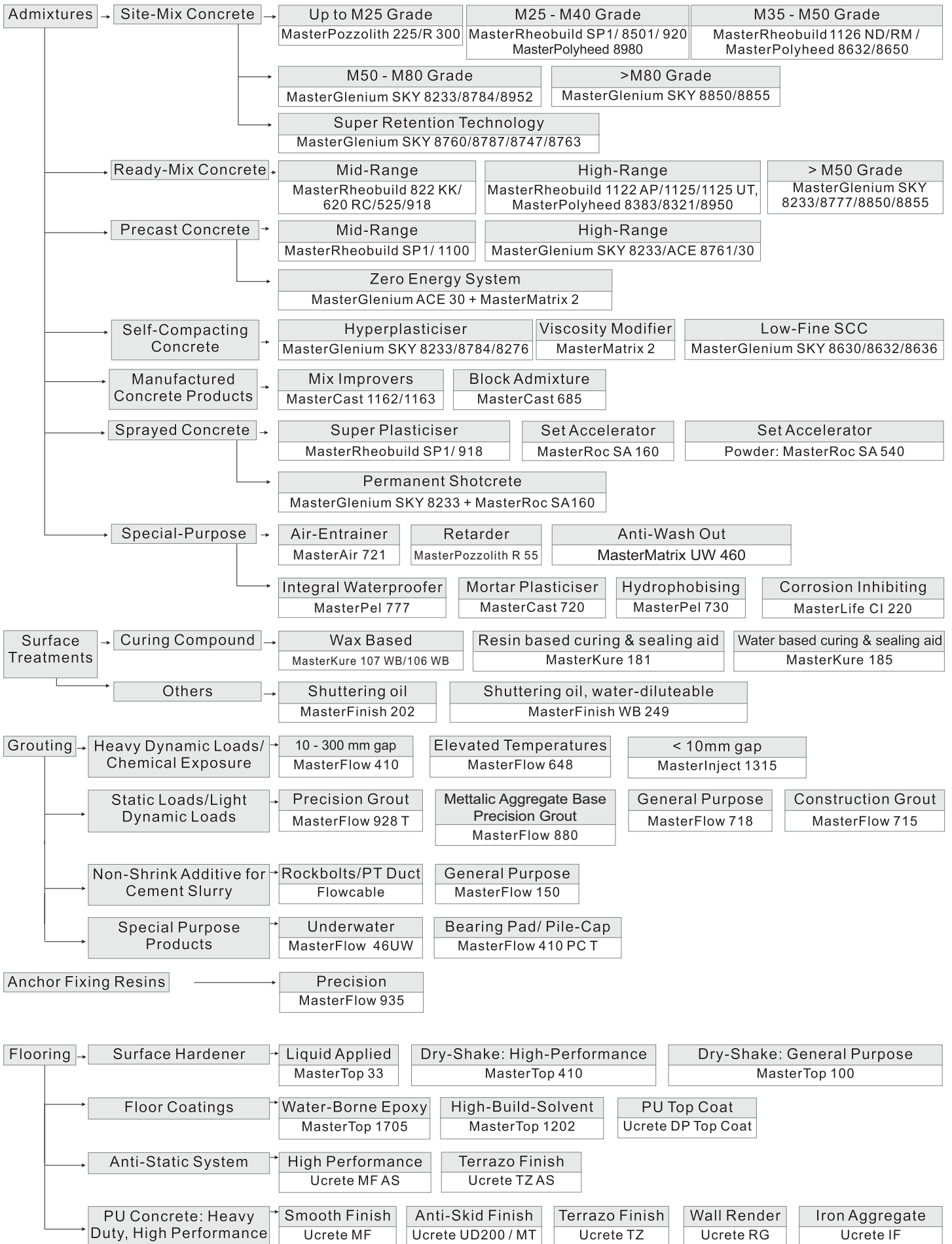


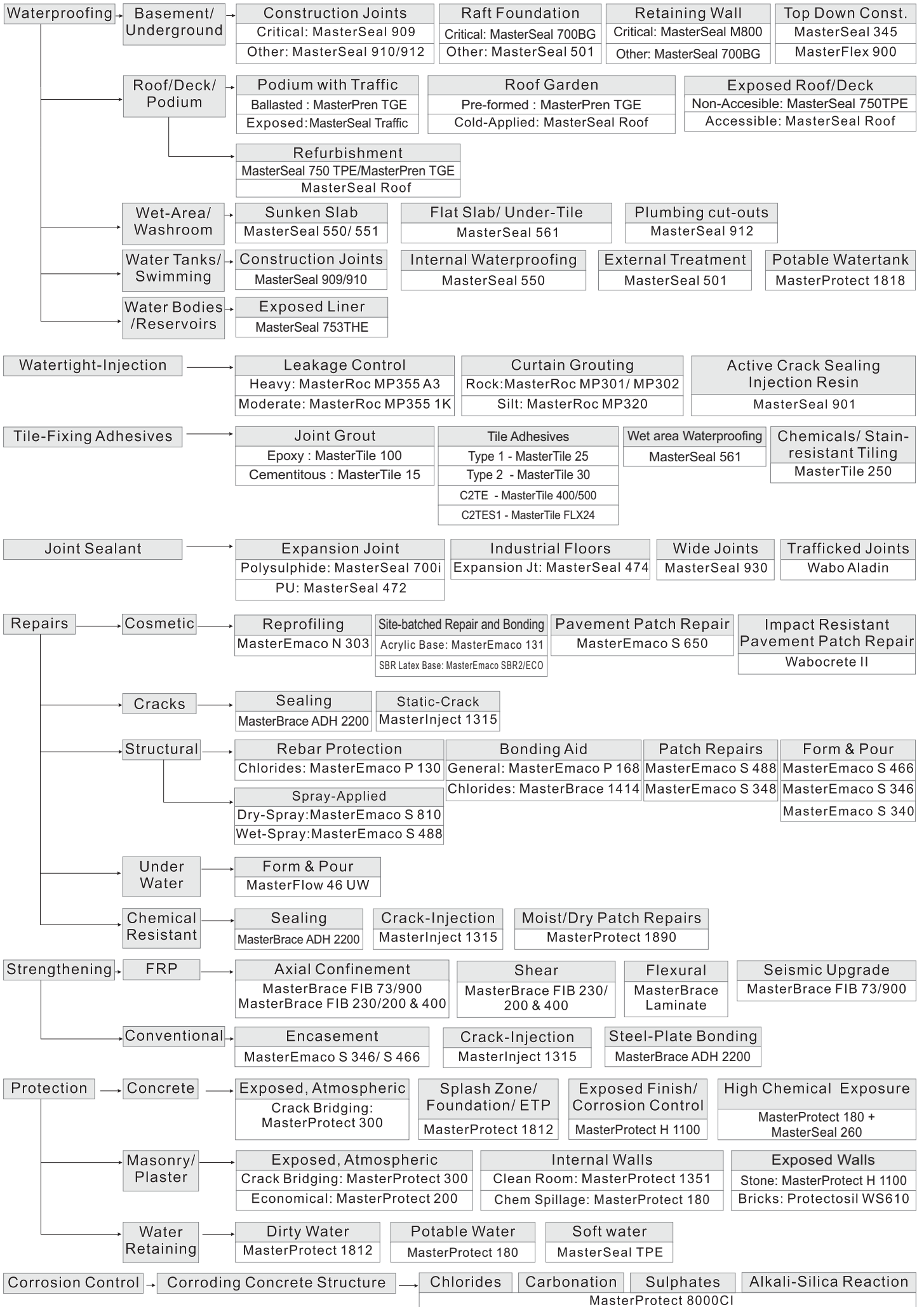


# Product Summary Guide

# System Selection Chart







Packing	Applications	Features & Benefits	Usage Guidelines	Estimation
<h1>AD MIXTURES</h1>				
<b>MasterCast® 720 : Liquid mortar plasticiser</b>				
1, 5, 20 litre	<ul style="list-style-type: none"> <li>■ Masonry Plaster</li> <li>■ Brick laying mortar</li> <li>■ Packing Renders</li> </ul>	<ul style="list-style-type: none"> <li>■ Reduces harshness in mix</li> <li>■ Imparts waterproofing</li> <li>■ Reduces efflorescence</li> </ul>	Stir well before use. Introduce along with gauging water at the last to the mixer for best result.	75 - 100 ml per bag of cement*.
<b>MasterPel® 777 : Robust 2-in-1 High Performance, Water-reducing and Waterproofing Concrete / Mortar Admixture</b>				
1, 5, 20 & 210 Litre	<ul style="list-style-type: none"> <li>■ Reinforced Cement Concrete, Plasters &amp; Mortars, Washrooms</li> <li>■ Water Retaining Structures</li> </ul>	<ul style="list-style-type: none"> <li>■ Water-reducing admixture - Improves workability, cohesion, pumpability and reduces segregation.</li> <li>■ Waterproofing admixture - Provides resistance to water penetration either under hydrostatic pressure or capillary absorption</li> </ul>	Stir well before use. Introduce along with gauging water at the last to the mixer for best result. Always use measured quantities	100-200ml per bag of cement
<b>MasterPozzolith® 225 : Water reducing/ plasticising admixture for concrete</b>				
1, 5, 20 litre; 245 Kg	<ul style="list-style-type: none"> <li>■ R.C.C. Members</li> <li>■ Site-batched concrete</li> <li>■ Low-slump concrete</li> <li>■ Concrete blocks/tiles</li> </ul>	<ul style="list-style-type: none"> <li>■ ASTM C-494, Type A</li> <li>■ Enable cement saving</li> <li>■ Improves cohesion of mix</li> <li>■ Reduces capillary pores</li> </ul>	Stir well before use. Introduce along with gauging water at the last to the mixer for best result. Always use measured quantities.	100 - 250 ml per bag of cement*.
<b>MasterPozzolith® R 55: Set-retarding plasticiser</b>				
20, 235 Kg	<ul style="list-style-type: none"> <li>■ Controlled set-retarder</li> <li>■ Hot weather concrete</li> <li>■ Self-compacting mixes</li> <li>■ Slip-form placements</li> </ul>	<ul style="list-style-type: none"> <li>■ ASTM C-494, Type B &amp; D</li> <li>■ Excellent slump retention</li> <li>■ Low impact on strength gain</li> <li>■ Low dosage - economical</li> </ul>	Stir well before use. Introduce along with gauging water at the last to the mixer for best result. Always use measured quantities.	100 - 250 ml per bag of cement*.
<b>MasterSet® AC 100 : Non-Chloride, Strength accelerator for concrete</b>				
20, 245 Kg	<ul style="list-style-type: none"> <li>■ R.C.C. Members</li> <li>■ Cold weather concrete</li> <li>■ Pavement retrofitting</li> <li>■ Sub-zero concrete</li> </ul>	<ul style="list-style-type: none"> <li>■ ASTM C-494, Type C</li> <li>■ Accelerates hydration</li> <li>■ High early strength gains</li> <li>■ Compatible with most cement</li> </ul>	Stir well before use. Introduce along with gauging water at the last to the mixer for best result.	1.5 - 5 litre per m <sup>3</sup> of concrete.
<b>MasterPozzolith® R 300 : Water reducing retarding plasticiser</b>				
245 Kg	<ul style="list-style-type: none"> <li>■ Raft and foundations</li> <li>■ Hot weather concrete</li> <li>■ Ready-mix concrete</li> <li>■ PQC for rigid pavement</li> </ul>	<ul style="list-style-type: none"> <li>■ ASTM C-494, Type B &amp; D</li> <li>■ Wide-dosage range - robust</li> <li>■ Enhances pumping</li> <li>■ Improves cohesion of mix</li> </ul>	Stir well before use. Introduce along with gauging water at the last to the mixer for best result.	150 - 500 ml per bag of cement*.
<b>MasterRheobuild® SP1 : High-range water reducer/ Superplasticiser</b>				
5, 20 Litre; 235 Kg	<ul style="list-style-type: none"> <li>■ Site-batched concrete</li> <li>■ wet-shotcrete mix</li> <li>■ Precast elements</li> <li>■ Prestress concrete</li> </ul>	<ul style="list-style-type: none"> <li>■ ASTM C-494, Type F</li> <li>■ Enables high-early strengths</li> <li>■ Reduced friction in pumps</li> <li>■ Enables reduced w/c ratio</li> </ul>	Stir well before use. Introduce along with gauging water at the last to the mixer for best result.	300 - 1000 ml per bag of cement*.
<b>MasterRheobuild® 918/525/822 KK/620 RC: Retarding-Superplasticisers for RMC</b>				
Master Rheobuild 918-235 kg Others- 275kg	<ul style="list-style-type: none"> <li>■ Ready-mix concrete</li> <li>■ Long haul concrete</li> <li>■ OPC/Fly-ash mixes</li> </ul>	<ul style="list-style-type: none"> <li>■ ASTM C-494, Type G</li> <li>■ Improves slump-retention</li> <li>■ Reduced bleed/segregation</li> <li>■ Low dosage, economical</li> </ul>	Stir well before use. Introduce along with gauging water at the last to the mixer for best result.	300 - 1000 ml per bag of cement*.
<b>MasterRheobuild® 8501/521/623 : Mid-range, Retarding-Superplasticisers</b>				
Master Rheobuild 623-250kg Others - 275kg	<ul style="list-style-type: none"> <li>■ Site-batched concrete</li> <li>■ Ready-mix concrete</li> <li>■ Blended cements</li> </ul>	<ul style="list-style-type: none"> <li>■ ASTM C-494, Type G</li> <li>■ Optimized, low-dose formula</li> <li>■ Reduced bleed/segregation</li> <li>■ Improves slump-retention</li> </ul>	Stir well before use. Introduce along with gauging water at the last to the mixer for best result.	250 - 750 ml per bag of cement*.
<b>MasterRheobuild® :1125/1123 High-range, Retarding-Superplasticisers</b>				
275 kg or Bulk	<ul style="list-style-type: none"> <li>■ Silica-fume/slag mix</li> <li>■ High-grade concrete</li> <li>■ Site-batched concrete</li> <li>■ Precast/pre-stress mix</li> </ul>	<ul style="list-style-type: none"> <li>■ Good dispersion capability</li> <li>■ Higher water reductions</li> <li>■ Extended slump-retention</li> <li>■ Controlled retardation</li> </ul>	Stir well before use. Introduce along with gauging water at the last to the mixer for best result.	400 - 1000 ml per bag of cement*.
<b>MasterRheobuild® 2000M : A high range, Melamine-based Superplasticiser</b>				
225 Kg	<ul style="list-style-type: none"> <li>■ FRC Articles</li> <li>■ Cold weather concrete</li> </ul>	<ul style="list-style-type: none"> <li>■ ASTM C-494, Type A, E, F</li> <li>■ Clear liquid - suited for white cement articles</li> </ul>	Stir well before use. Introduce along with gauging water at the last to the mixer for best result.	500 - 1000 ml per bag of cement*.
<b>MasterPolyheed® 8430 : Retarding Superplasticiser based on PCE for Ready mix concrete</b>				
220 Kg	<ul style="list-style-type: none"> <li>■ Ready mixed concrete</li> <li>■ Long-distance transporting</li> <li>■ Pumped concrete</li> <li>■ High workability without segregation or bleeding</li> </ul>	<ul style="list-style-type: none"> <li>■ Good dispersion even in mixes with high fines</li> <li>■ High workability for longer periods</li> <li>■ Lower pumping pressure</li> <li>■ Resistance to segregation even at high workability</li> </ul>	Refer guidelines of MasterRheobuild 2000M	400 - 1200 ml per 100 Kg of Cement

\* 50 kg of cement/binder



Packing	Applications	Features & Benefits	Usage Guidelines	Estimation
<b>MasterGlenium® SKY8233 : PCE (Poly-carboxylic ether) based Hyper plasticiser</b> ■ ■ ■				
20, 225 Kg	<ul style="list-style-type: none"> <li>■ Precast concrete</li> <li>■ Triple-blend mixes</li> <li>■ Self-compacting mixes</li> <li>■ Site-batched concrete</li> </ul>	<ul style="list-style-type: none"> <li>■ ASTM C-494, Type F</li> <li>■ Excellent water reductions</li> <li>■ High early strength gains</li> <li>■ Controlled slump-drop</li> </ul>	Stir well before use. Introduce along with gauging water at the last to the mixer for best result. Always use measured quantities.	200 - 750 ml per bag of cement*.
<b>MasterGlenium® ACE 30 : Slump-retaining, Hyper-plasticiser for Precast</b> ■ ■				
225 Kg	<ul style="list-style-type: none"> <li>■ Precast segments</li> <li>■ Prestress concrete</li> <li>■ Hollow-core slabs</li> <li>■ Cold weather concrete</li> </ul>	<ul style="list-style-type: none"> <li>■ ASTM C-494, Type E, F, G</li> <li>■ Ultra-high early strengths</li> <li>■ Eliminates need of steam-cure</li> <li>■ Controlled Slump-retention</li> </ul>	Stir well before use. Introduce along with gauging water at the last to the mixer for best result. Always use measured quantities.	250 - 750 ml per bag of cement*.
<b>MasterGlenium® SKY8784/8777/8787 : New Generational Hyper plasticisers for RMC</b> ■ ■				
225 Kg	<ul style="list-style-type: none"> <li>■ Ready-mix concrete</li> <li>■ Site-batched concrete</li> <li>■ Triple-blend mixes</li> <li>■ Self-compacting mixes</li> </ul>	<ul style="list-style-type: none"> <li>■ ASTM C-494, Type F, G</li> <li>■ Excellent slump-retention</li> <li>■ High-early strength gains</li> <li>■ Adaptable to cement changes</li> </ul>	Stir well before use. Introduce along with gauging water at the last to the mixer for best result. Always use measured quantities.	250 - 750 ml per bag of cement*.
<b>MasterGlenium® SKY 8276 : Super slump-retaining, Hyper-plasticiser</b> ■ ■ ■				
225 Kg	<ul style="list-style-type: none"> <li>■ Site-batched concrete</li> <li>■ Long haul concrete</li> <li>■ Precast girders</li> <li>■ Ready-mix concrete</li> </ul>	<ul style="list-style-type: none"> <li>■ ASTM C-494, Type F, G</li> <li>■ Adaptable to cement changes</li> <li>■ Robust strength enhancer</li> <li>■ Controlled slump-retention</li> </ul>	Stir well before use. Introduce along with gauging water at the last to the mixer for best result. Always use measured quantities.	250 - 750 ml per bag of cement*.
<b>MasterMatrix® 2 : Viscosity modifier for self-compacting concrete (SCC)</b> ■ ■ ■				
20, 210 Kg	<ul style="list-style-type: none"> <li>■ Self-compacting mixes</li> <li>■ Gap graded mixes</li> </ul>	<ul style="list-style-type: none"> <li>■ Complies with EFNARC</li> <li>■ Improves cohesion</li> <li>■ Reduces segregation</li> <li>■ Ready to use</li> </ul>	Stir well before use. Introduce along with gauging water at the last to the mixer for best result. Always use measured quantities.	0.1 - 0.5 % by weight of binder.
<b>MasterGlenium® SKY 8630 : Hyper Plasticizer</b> ■ ■				
225 Kg	<ul style="list-style-type: none"> <li>■ Low-fine Self-compacting concrete</li> <li>■ Viscosity enhancer</li> </ul>	<ul style="list-style-type: none"> <li>■ Complies with EFNARC</li> <li>■ Enables low-grade SCC</li> <li>■ Works with low-fines</li> </ul>	Stir well before use. Introduce along with gauging water at the last to the mixer for best result. Always use measured quantities.	0.1 - 0.6 % by weight of binder.
<b>MasterCast® 1162/ 1163 : Admixtures for non-structural pre-cast articles (MCP)</b> ■ ■				
20, 225/245 Kg	<ul style="list-style-type: none"> <li>■ Concrete paver blocks</li> <li>■ Paver/roof tiles</li> <li>■ Man-hole cover, pipes</li> <li>■ Railway sleepers</li> </ul>	<ul style="list-style-type: none"> <li>■ Improves cohesion</li> <li>■ Improves compaction</li> <li>■ Reduced wear on moulds</li> <li>■ Increased production</li> </ul>	Stir well before use. Introduce along with gauging water at the last to the mixer for best result. Always use measured quantities.	250 - 900 ml per bag of cement*.
<b>MasterAir® 721 : Air entraining admixture for concrete</b> ■ ■				
20, 210 Kg	<ul style="list-style-type: none"> <li>■ PQC - Rigid Pavements</li> <li>■ Mass concrete in dams</li> <li>■ Slip form kerbs</li> <li>■ Concrete blocks</li> </ul>	<ul style="list-style-type: none"> <li>■ Complies with ASTM C-260</li> <li>■ Controlled micro-bubbles</li> <li>■ Least strength reduction</li> <li>■ Low dosage, economical</li> </ul>	Stir well before use. Introduce along with gauging water at the last to the mixer for best result.	0.1 - 0.2 % by weight of binder.
<b>MasterRoc® HCA 20 : Hydration Inhibitor for concrete &amp; shotcrete</b> ■ ■				
225 Kg	<ul style="list-style-type: none"> <li>■ Long-haul mixes</li> <li>■ Returned concrete</li> <li>■ Wash water handling</li> <li>■ On-demand shotcrete</li> </ul>	<ul style="list-style-type: none"> <li>■ ASTM C-494, Type B</li> <li>■ Controlled inhibition</li> <li>■ Option for Early activation</li> <li>■ Salvage return concrete</li> </ul>	Please refer the datasheet for the usage instructions as per the intended applications.	0.4 - 2.0 % by weight of binder.
<b>MasterCell® 30 : Foaming agent for producing light-weight concrete/CLSM</b> ■ ■				
20 Kg	<ul style="list-style-type: none"> <li>■ Light-weight backfills</li> <li>■ Lightweight concrete</li> <li>■ Foamed mortar</li> </ul>	<ul style="list-style-type: none"> <li>■ Produces stable foam</li> <li>■ Enables predictable density</li> <li>■ Liquid, Ease to use</li> <li>■ Density as low as 600 kg/m<sup>3</sup></li> </ul>	Generate foam using Meyco Foam gun and introduce the foam in wet mix. Rotate the drum for even dispersion of foam.	Please refer product datasheet.
<b>MasterLife® CI 220 : Dual Mechanism Corrosion Inhibiting Admixture (Bi-Polar)</b> ■				
235 Litre	<ul style="list-style-type: none"> <li>■ Marine structures</li> <li>■ Sub-Structures - Piles, Diaphragm walls</li> <li>■ Rafts &amp; Foundation</li> <li>■ Sea-water intake structures</li> </ul>	<ul style="list-style-type: none"> <li>■ Inhibits corrosion at its most critical points</li> <li>■ Reduces the rate at which chlorides and moisture enter the concrete</li> <li>■ Extended service life of reinforced concrete structures</li> <li>■ Increased sulfate resistance</li> </ul>	MasterLife CI 220 may be added with concrete batch water. It should not be mixed with any other admixtures prior to being introduced into the concrete mixer. The use of this admixture does not require changes in normal batching procedures.	3 to 8 L/m <sup>3</sup>
<b>MasterPel® 730 : Hydrophobic pore-blocking ingredient (H.P.I.) for concrete</b> ■ ■				
210 litre	<ul style="list-style-type: none"> <li>■ Rafts &amp; retaining walls</li> <li>■ Water retaining tanks</li> <li>■ Marine structures</li> <li>■ Cooling towers</li> </ul>	<ul style="list-style-type: none"> <li>■ Reduced water absorption</li> <li>■ Integral approach</li> <li>■ Ammonia free - Ease to use</li> <li>■ Compatible with coatings</li> </ul>	Stir well before use. Introduce along with gauging water at the last to the mixer for best result.	1.0 - 2.0 liters per 100 kg of cement.
<b>MasterRoc® SA160 : Alkali-free, liquid set-accelerator for wet-shotcrete</b> ■ ■ ■				
275 Kg	<ul style="list-style-type: none"> <li>■ Rock-support in tunnel</li> <li>■ Permanent shotcrete</li> <li>■ Slope stabilization</li> <li>■ Tunnels by NATM</li> </ul>	<ul style="list-style-type: none"> <li>■ Complies with EFNARC</li> <li>■ Quick setting, rapid hardening</li> <li>■ Low rebound loss, savings</li> <li>■ Enable high-thickness built</li> </ul>	Stir well before use. Introduce to shotcrete mix at nozzle using Meyco dosing unit.	3 - 8 % by weight of binder.
<b>MasterRoc® SA540 : Alkali-free, powder set-accelerator for dry-shotcrete</b> ■ ■				
25 Kg	<ul style="list-style-type: none"> <li>■ Dry-shotcrete</li> </ul>	<ul style="list-style-type: none"> <li>■ Quick setting, rapid hardening</li> </ul>	Pre-mix with binder	Refer TDS

Packing	Applications	Features & Benefits	Usage Guidelines	Estimation
<b>CONCRETE SURFACE IMPROVEMENT</b>				
<b>MasterKure® 111CF : Evaporation reducer for fresh-concrete</b>				
20, 210 Litre	<ul style="list-style-type: none"> <li>■ PQC- Rigid Pavements</li> <li>■ Industrial Floors</li> <li>■ Hot weather concrete</li> </ul>	<ul style="list-style-type: none"> <li>■ Complies with ACI-305R</li> <li>■ Retains surface moisture</li> <li>■ Reduces surface cracking</li> <li>■ High coverage, economical</li> </ul>	Stir well before use. Dilute 1:9 with water. Apply using knapsack sprayer to uniform film on freshly placed and finished concrete.	50 - 100 m <sup>2</sup> /litre
<b>MasterKure® 106WB: Clear, wax based curing compound for concrete</b>				
20, 210 litre	Most economical alternative to wet-hessian and water curing.	<ul style="list-style-type: none"> <li>■ ASTM C-309, Type I, Class A</li> <li>■ Good curing efficiency</li> <li>■ Easy and convenient to use</li> <li>■ Economical alternative</li> </ul>	Stir well before use. Apply using Knapsack sprayer or soft bristle brush to uniform film.	5 - 6 m <sup>2</sup> /litre.
<b>MasterKure® 107 WB: White-pigmented, wax based curing compound</b>				
5, 20, 210 litre	<ul style="list-style-type: none"> <li>■ Concrete exposed to direct sunray</li> <li>■ Dry-lean concrete</li> <li>■ Water canal lining</li> </ul>	<ul style="list-style-type: none"> <li>■ ASTM C-309, Type II, Class A</li> <li>■ Good curing efficiency</li> <li>■ Good solar heat reflection</li> <li>■ Easy and convenient to use</li> </ul>	Stir well before use. Apply using Knapsack sprayer or soft bristle brush to uniform film.	5 - 6 m <sup>2</sup> /litre.
<b>MasterKure® 181 : Acrylate-resin based, curing compound cum sealer</b>				
20 litre	<ul style="list-style-type: none"> <li>■ Multi functional - Curing compound cum sealer cum primer</li> <li>■ Moisture barrier primer</li> </ul>	<ul style="list-style-type: none"> <li>■ ASTM C-309, Type I/II, Class B</li> <li>■ Available in white or clear</li> <li>■ No need to remove</li> <li>■ Protects concrete at early age</li> </ul>	Stir well before use. Apply using Knapsack sprayer or soft bristle brush to uniform film.	4 - 6 m <sup>2</sup> /litre.
<b>MasterKure® 185 : Acrylic polymer based, multi-role curing, sealing and protective membrane</b>				
5 & 20 litre	<ul style="list-style-type: none"> <li>■ Surfaces subject to finishing treatments.</li> <li>■ Economical enhancement of concrete flatwork.</li> <li>■ In high-rise construction to eliminate the requirement for water.</li> </ul>	<ul style="list-style-type: none"> <li>■ Improves moisture retention in concrete</li> <li>■ Reduces the incidence of hairline cracks</li> <li>■ Available in Solar reflective grade</li> <li>■ Act as primer for protective coatings</li> </ul>	Stir well before use. Apply using Knapsack Sprayer or soft bristle brush to uniform film	4 - 6 m <sup>2</sup> /litre.
<b>MasterFinish® 202 : Solvented, ready-to-use, mould release agent</b>				
20, 210 litre	<ul style="list-style-type: none"> <li>■ Metal &amp; wood shutters</li> <li>■ Steel moulds</li> <li>■ Aluminum form work</li> </ul>	<ul style="list-style-type: none"> <li>■ Also suitable for precast</li> <li>■ For early de-stripping</li> <li>■ Smooth, hard, uniform finish</li> <li>■ Stain free surfaces</li> </ul>	Stir well before use. Apply using brush/cotton to thin, uniform finish on shutter/mould surface.	30 -70 m <sup>2</sup> /litre
<b>MasterFinish® WB 249 : Water-diluteable, mould release agent</b>				
20, 210 litre	<ul style="list-style-type: none"> <li>■ Cast in-situ concrete</li> <li>■ Aluminum form work</li> </ul>	<ul style="list-style-type: none"> <li>■ Diluteable - Economical</li> <li>■ Solvent free - user friendly</li> <li>■ Smooth, hard, uniform finish</li> <li>■ Stain free surfaces</li> </ul>	Stir well before use. Dilute 1:4 with water. Apply using brush/cotton to thin, uniform finish on shutter/ mould surface.	80 -120 m <sup>2</sup> /litre
<b>GROUTS &amp; RESIN ANCHORS</b>				
<b>MasterFlow® 715 : Non-shrink, cementitious, construction grout</b>				
25 Kg moisture resistant bag	<ul style="list-style-type: none"> <li>■ Stanchion base</li> <li>■ Static machines</li> <li>■ Precast element joints</li> <li>■ Electric towers &amp; Posts</li> </ul>	<ul style="list-style-type: none"> <li>■ ASTM C-1107, Grade A</li> <li>■ Comp. St. of 50 Mpa</li> <li>■ Pre-packed, ready-to-use</li> <li>■ Consistent performance</li> </ul>	Mix with 4.25 litre of water and stir for at least 5 minutes. Ensure to pour continuously and from one side while maintaining head.	72 bags per m <sup>3</sup> (Yield: 13.9 litre per bag)
<b>MasterFlow® 718 : Non-shrink, cementitious, general-purpose grout</b>				
25 Kg moisture resistant bag	<ul style="list-style-type: none"> <li>■ Stanchion base</li> <li>■ Machine Foundations</li> <li>■ Bolt pockets grouting</li> <li>■ Crane rail grouting</li> </ul>	<ul style="list-style-type: none"> <li>■ ASTM C-1107, Grade A</li> <li>■ Comp. St. of 65 Mpa</li> <li>■ Pre-packed, ready-to-use</li> <li>■ Consistent performance</li> </ul>	Mix with 4 litre of water and stir for at least 5 minutes. Ensure to pour continuously and from one side while maintaining head.	76 bags per m <sup>3</sup> (Yield: 13.1 litre per bag)
<b>MasterFlow® 928T : Non-shrink, cementitious, precision grout</b>				
25 Kg moisture resistant bag	<ul style="list-style-type: none"> <li>■ Precisely align machine</li> <li>■ Dynamic Loads</li> <li>■ Turbine foundations</li> <li>■ Power generators</li> </ul>	<ul style="list-style-type: none"> <li>■ ASTM C-1107, Grade C</li> <li>■ Comp. St. of 70 Mpa</li> <li>■ Dual-shrinkage compensated</li> <li>■ Consistent performance</li> </ul>	Mix with 3.75 litre of water and stir for at least 5 minutes. Ensure to pour continuously and from one side while maintaining head.	78 bags per m <sup>3</sup> (Yield: 13 litre per bag)
<b>MasterFlow® 880 : Non-shrink, High strength Metallic reinforced Precision grout</b>				
25 Kg moisture resistant bag	<ul style="list-style-type: none"> <li>■ Precisely align machine</li> <li>■ Heavy Impact / Dynamic Loads</li> <li>■ Wind Turbine foundation</li> <li>■ Vertical Roller Mills</li> <li>■ Power generators</li> </ul>	<ul style="list-style-type: none"> <li>■ ASTM C-1107, Grade C</li> <li>■ Comp. St. &gt; 90 Mpa</li> <li>■ Dual-shrinkage compensated</li> <li>■ Consistent performance</li> </ul>	Mix with 3.5 litre of water and stir for at least 5 minutes. Ensure to pour continuously and from one side while maintaining head.	186 bags per m <sup>3</sup> (Yield: 12.4 litre per bag)
<b>MasterFlow® 410 : Thick-bed, filler-extended, epoxy resin grout</b>				
20 Kg ready to use pack	<ul style="list-style-type: none"> <li>■ Precision grouting</li> <li>■ Dynamic loading</li> <li>■ Exposure to chemicals</li> <li>■ Process equipments</li> </ul>	<ul style="list-style-type: none"> <li>■ Comp. St. of 100 Mpa</li> <li>■ Thick-bed: 10 - 300 mm thick</li> <li>■ Good chemical resistance</li> <li>■ Low-exotherm, no-cracking</li> </ul>	Mix all the three components using mechanical stirrer for at least 3 minutes to lumps free consistency. Pour from one side, with head.	120 Packs per m <sup>3</sup> . (Yield: 8.3 litre per pack)



Packing	Applications	Features & Benefits	Usage Guidelines	Estimation
<b>MasterFlow® 648 : High-performance, filler-extended, epoxy resin grout</b>				
23 Kg ready to use pack	<ul style="list-style-type: none"> <li>■ Precision grouting</li> <li>■ High-tempratures</li> <li>■ Gas compressors</li> <li>■ Process equipments</li> </ul>	<ul style="list-style-type: none"> <li>■ Comp. St. of 100 MPa</li> <li>■ High-temperature performance</li> <li>■ Excellent creep resistance</li> <li>■ Options of standard/high flow</li> </ul>	Mix all the components using mechanical stirrer for at least 5 minutes to lumps free consistency. Pour from one side, with head.	Yield: 10.2 & 8.3 litre/pack for std. Flow & high flow resp.
<b>Flowcable® : Expanding, plasticising additive for PT cable-duct grouting</b>				
15 Kg moisture resistant bag	<ul style="list-style-type: none"> <li>■ PT Cable duct grouting</li> <li>■ Rock anchor grouting</li> <li>■ Soil nail grouting</li> <li>■ Non-shrink additive</li> </ul>	<ul style="list-style-type: none"> <li>■ Dual-shrinkage compensated</li> <li>■ Enables w/c as low as 0.3</li> <li>■ Controlled bleed water &lt; 0.2%</li> <li>■ Imparts thixotropy to slurry</li> </ul>	Dry mix with cement and introduce 80% of gauging water, mix for 3 minutes, introduce balance water, mix for 2 minutes more. Use now.	6% by weight of cement.
<b>MasterFlow® 150 : Expanding, plasticising, non-shrink additive for cement</b>				
250 grams pouch	Site-batched non-shrink cement mortar/ slurry	<ul style="list-style-type: none"> <li>■ Gaseous expansion system</li> <li>■ Low dosage -economical</li> <li>■ Available in ready-to-use pack</li> </ul>	Dry mix with cement and introduce 80% of gauging water, mix for 3 minutes, introduce balance water, mix for 2 minutes more. Use now.	One pouch of 250 grams per bag of cement*.
<b>MasterFlow® 935 : High-Performance, Epoxy based Resin anchor system</b>				
400 ml side-by-side cartridge	<ul style="list-style-type: none"> <li>■ Heavy-duty anchors</li> <li>■ Fixing treaded rods</li> <li>■ Diamond cored holes</li> <li>■ Refurbishment jobs</li> </ul>	<ul style="list-style-type: none"> <li>■ Acrylate and cement free</li> <li>■ Moisture tolerant</li> <li>■ Accommodates higher gaps</li> <li>■ Tropicalised - extended potlife</li> </ul>	Load the cartridge in the dispenser gun and fix the static mixer at the tip. Dispense resin by required no of trigger pulls.	50 trigger pull per cartridge (Yield: 8ml per trigger pull)

## PRECAST SEGMENTAL BONDING ADHESIVE

<b>MasterBrace® 1441 : Epoxy resin based bonding adhesive</b>				
6 Kg pack	<ul style="list-style-type: none"> <li>■ Bonding of precast bridge segments</li> <li>■ Old to old concrete elements bonding</li> </ul>	<ul style="list-style-type: none"> <li>■ Complies with FIP Norms</li> <li>■ Available in summer/winter versions for optimum open time</li> <li>■ Complies with ASTM C-881</li> </ul>	Mix the two components with slow speed stirrer to smooth consistency. Uniformly apply with spatula/knife to substrate.	1.6 m <sup>2</sup> /pack at 2mm thick (Yield: 3.25 litre/pack)

## FLOORING SOLUTIONS

<b>MasterTop® 33 : Surface Applied concrete hardening &amp; dustproofing liquid</b>				
20 Litre	<ul style="list-style-type: none"> <li>■ Warehouse floors</li> <li>■ Manufacturing areas</li> <li>■ Grain processing area</li> <li>■ High pedestrian traffic</li> </ul>	<ul style="list-style-type: none"> <li>■ Consolidates &amp; hardens</li> <li>■ Irreversible chemistry</li> <li>■ Even works on old floors</li> <li>■ High performance formula</li> </ul>	Stir well before use. Roughen the substrate to expose pores. Apply 2-3 times for full crystallization. Use buffing machine to get shin.	4 to 8 m <sup>2</sup> /litre in 2-3 coats depending on substrate.
<b>MasterTop® 410 : Emery based, Non-metallic, dry shake surface hardener</b>				
25 Kg moisture resistant bag	<ul style="list-style-type: none"> <li>■ Heavy traffic area</li> <li>■ Manufacturing areas</li> <li>■ Warehouses &amp; stores</li> <li>■ Parking decks &amp; ramps</li> </ul>	<ul style="list-style-type: none"> <li>■ Hardness of 8 - 9 moh's</li> <li>■ Non rusting formula</li> <li>■ Hard wearing, long lasting</li> <li>■ Suits vacuum dewatering floor</li> </ul>	Apply in two turns, 2/3 in 1st and 1/3 in second. Ensure to dry-shake and finish before final setting time of concrete.	3 - 8 Kg/m <sup>2</sup> based on the intensity of traffic & load.
<b>MasterTop® 100 : Quartz based, Non-metallic, dry shake surface hardener</b>				
25 Kg moisture resistant bag	<ul style="list-style-type: none"> <li>■ Manufacturing areas</li> <li>■ Warehouses &amp; stores</li> <li>■ Parking decks &amp; ramps</li> <li>■ High pedestrian traffic</li> </ul>	<ul style="list-style-type: none"> <li>■ Hardness of 7 - 8 moh's</li> <li>■ Non rusting formula</li> <li>■ Hard wearing, long lasting</li> <li>■ Suits vacuum dewatering floor</li> </ul>	Apply in two turns, 2/3 in 1st and 1/3 in second. Ensure to dry-shake and finish before final setting time of concrete.	3 - 8 Kg/m <sup>2</sup> based on the intensity of traffic & load.
<b>MasterTop® 1705 : Water-based, epoxy floor and wall coating</b>				
7 Kg ready to use pack	<ul style="list-style-type: none"> <li>■ Soft wheel traffic area</li> <li>■ Water &amp; Food storage</li> <li>■ Packing lines</li> <li>■ Underground car-parks</li> </ul>	<ul style="list-style-type: none"> <li>■ Moisture insensitive, breathes</li> <li>■ Improves lighting in the area</li> <li>■ Semi-gloss, smooth finish</li> <li>■ Non-Toxic, Potable grade</li> </ul>	Mix the two components using slow speed stirrer. Apply using brush/roller in two-three coats to smooth, satin finish.	8 - 10 m <sup>2</sup> per pack in 2-3 coats.
<b>MasterTop® 1202 : High-build, solvent free epoxy resin coating for concrete floor</b>				
4 Kg pack	<ul style="list-style-type: none"> <li>■ Engineering workshops</li> <li>■ Production and assembly lines</li> <li>■ Aircraft maintenance and assembly</li> <li>■ Industrial &amp; Warehousing floors</li> </ul>	<ul style="list-style-type: none"> <li>■ Solvent free – non Flammable and low odour</li> <li>■ Good wear &amp; abrasion resistance</li> <li>■ Easily cleanable, non dusting</li> <li>■ Slip resistant – can be textured to give desired slip resistance</li> </ul>	Mix the two components using slow speed stirrer. Apply using brush/roller in two-three coats to smooth, satin finish	5 m <sup>2</sup> / pack in 2 coats for 500 micron thickness
<b>MasterTop® 1324 : Resilient, self-smoothing PU floor topping</b>				
Please refer datasheet	<ul style="list-style-type: none"> <li>■ Dynamic loads</li> <li>■ Frequent movements</li> <li>■ Automotive parts</li> <li>■ Assembly areas</li> </ul>	<ul style="list-style-type: none"> <li>■ 2 - 4 mm thick</li> <li>■ Long lasting, aesthetical finish</li> <li>■ Accommodates movements</li> <li>■ Tough &amp; scratch-resistant</li> </ul>	Mix all components using slow speed stirrer. Apply using trowel in single layer and finish using spike roller to smooth surface.	Multi-layer system, please refer datasheet.
<b>Ucrete® MF : High-Performance, self-smoothing, PU-cementitious flooring</b>				
Please refer datasheet	<ul style="list-style-type: none"> <li>■ Clean room</li> <li>■ Chemical process area</li> <li>■ Food &amp; Beverages</li> <li>■ Bulk drug plants</li> </ul>	<ul style="list-style-type: none"> <li>■ 3 -6 mm thick</li> <li>■ Anti-bacterial finish</li> <li>■ Excellent chemical resistance</li> <li>■ Long lasting, proven solution</li> </ul>	Mix all the four components with slow speed stirrer. Apply with serrated trowel and finish with spike roller/pin-screed.	8 -10 Kg/m <sup>2</sup> at 4mm thickness.

Packing	Applications	Features & Benefits	Usage Guidelines	Estimation
<b>Ucrete® UD200 : Heavy-Duty, PU-cementitious floor topping</b> ■ ■				
Please refer datasheet	<ul style="list-style-type: none"> <li>Chemical process area</li> <li>Wet-process area</li> <li>Food &amp; Beverages</li> <li>Bulk drug plants</li> </ul>	<ul style="list-style-type: none"> <li>6 -12 mm thick</li> <li>Serviceable: -40°C to 130°C</li> <li>Excellent chemical resistance</li> <li>Excellent impact resistance</li> </ul>	Mix all the four components with slow speed stirrer. Apply with serrated trowel and finish with Pin-screed/Spike-rollers.	12 -14 Kg/m <sup>2</sup> at 6 mm thickness.
<b>Ucrete® MT : 4 – 6 mm Heavy Duty Polyurethane Floor Finish</b> ■ ■				
Please refer datasheet	<ul style="list-style-type: none"> <li>Food and beverage, pharmaceutical and chemical industries</li> <li>Wet and dry process environments</li> </ul>	<ul style="list-style-type: none"> <li>Solvent free and non-tainting</li> <li>Robust, long lived floor</li> <li>High mechanical strength and a low elastic modulus</li> <li>Able to withstand severe impact loads</li> </ul>	Refer the product datasheet for the detailed instructions for installation	4 mm: 10 – 11 kg/m <sup>2</sup> 6 mm: 12 – 14 kg/m <sup>2</sup>
<b>Ucrete® IF : Iron aggregate Heavy duty Polyurethane Floor Finish</b> ■ ■				
Please refer datasheet	<ul style="list-style-type: none"> <li>Waste Management, heavy engineering and manufacturing industries</li> </ul>	<ul style="list-style-type: none"> <li>Can be applied onto 7 day old concrete or 3 day old polymer screeds</li> <li>Fully serviceable within only 24 hours (subject to temperature )</li> <li>Solvent free and non tainting</li> <li>Specially treated iron aggregates for maximum abrasion resistance</li> </ul>	Refer the product datasheet for the detailed instructions for installation	9mm : 28 -30 kg/m <sup>2</sup>
<b>Ucrete® TZ : Heavy-Duty, Scratch Resistant, Terrazzo Finish</b> ■				
<b>Ucrete® RG: High-Performance, PU-cementitious Wall Render</b> ■ ■				

## ANTI-STATIC FLOORING

<b>Ucrete® MF/AS : Anti-static, self-smoothing, PU-cementitious flooring</b> ■				
Please refer datasheet	<ul style="list-style-type: none"> <li>Clean room</li> <li>Solvent handling area</li> <li>Operation theatre</li> <li>Electronics plant</li> </ul>	<ul style="list-style-type: none"> <li>4 -6 mm thick</li> <li>Anti-bacterial finish</li> <li>Excellent chemical resistance</li> <li>Long lasting, proven solution</li> </ul>	Mix all the four components with slow speed stirrer. Apply with serrated trowel and finish with spike roller/pin-screed.	8 -10 Kg/m <sup>2</sup> at 4mm thickness.

## REPAIR & STRENGTHENING SYSTEMS

<b>MasterEmaco® P 130 : Zinc-epoxy based, Galvanic Rust Inhibitor for Rebar</b> ■ ■ ■				
1 Litre ready to use pack	<ul style="list-style-type: none"> <li>Reinforcements</li> <li>Chloride attack</li> </ul>	<ul style="list-style-type: none"> <li>&gt;80% Zinc in dry film</li> <li>Forms tough, durable film</li> <li>Galvanic protection to rebar</li> <li>Best Sacrificial protection</li> </ul>	Mix the two components to lumps free consistency. Apply by brush to form continuous film. Apply minimum two coats.	8 - 10 m <sup>2</sup> /litre per coat.
<b>MasterBrace® 1414 : Epoxy bonding agent with long open time</b> ■ ■ ■				
1 & 3 kg ready to use pack	<ul style="list-style-type: none"> <li>Old to new concrete</li> <li>Chloride infused area</li> <li>Moist surfaces</li> </ul>	<ul style="list-style-type: none"> <li>Effective load transfer across bond line</li> <li>Long open time, &gt; 6 hours</li> <li>Small, ready to use pack</li> </ul>	Mix the two components with slow speed stirrer to smooth consistency. Apply with brush to continuous layer.	2 - 2.7 m <sup>2</sup> /kg
<b>MasterEmaco® P 168 : Acrylic bonding agent cum curing-aid</b> ■ ■ ■				
5 & 20 kg	<ul style="list-style-type: none"> <li>Repair mortar/concrete</li> <li>Curing-aid for mortars</li> <li>Primer for cementitious underlays/overlays</li> </ul>	<ul style="list-style-type: none"> <li>Good tensile bond strength</li> <li>Curing efficiency &gt; 55%</li> <li>Economical, ready to use</li> </ul>	Sir well before use. Apply by brush in circular motion to force deep penetration. Allow to become tacky before overlay.	4 - 6 m <sup>2</sup> /kg
<b>MasterInject® 1315 : Epoxy Injection Resin for structural bonding of cracks</b> ■ ■ ■				
1 & 4 litre ready to use pack	<ul style="list-style-type: none"> <li>Structural-bonding of static-cracks in concrete.</li> <li>Strengthening the concrete by filling in voids</li> </ul>	<ul style="list-style-type: none"> <li>Low viscous, Deep penetrative</li> <li>High strengths</li> <li>Excellent load transfer</li> <li>Small pack, easy to use</li> </ul>	Stir and mix well. Inject in the crack using the right one-component pump based on the crack width and depth.	Based on void/crack estimates.
<b>MasterBrace® ADH 2200 : Thixotropic epoxy adhesive &amp; fairing mortar</b> ■ ■ ■				
6 Kg ready to use pack	<ul style="list-style-type: none"> <li>Bonding adhesive</li> <li>Bedding mortar</li> <li>Fairing of concrete</li> <li>Sealing of cracks/voids</li> </ul>	<ul style="list-style-type: none"> <li>High Comp. st. &gt; 60 Mpa</li> <li>Two part, easy to use</li> <li>Good chemical resistance</li> <li>Excellent bond strength</li> </ul>	Mix the two components with slow speed stirrer to lumps free consistency. Apply using knife/trowel to even spread.	1.5 m <sup>2</sup> /pack at 2mm thick. (Yield: 3.25 litre/pack)
<b>MasterEmaco® N 303 : One component, cementitious re-profiling mortar</b> ■ ■				
25 Kg moisture resistant bag	<ul style="list-style-type: none"> <li>Re-profiling of concrete surfaces (&gt; 3mm thick)</li> <li>Repairs to sand runs/construction joints</li> </ul>	<ul style="list-style-type: none"> <li>Resistant to cracking</li> <li>Factory made, ready to use</li> <li>Good comp. St., &gt;20MPa</li> <li>Long pot-life formula</li> </ul>	Mix with 4.75 litre of water using slow speed drill for at least 3 minutes to lumps free consistency. Apply using knife/trowel to finish.	5 m <sup>2</sup> /bag at 3 mm thick. (Yield: 16 litre/pack)



Packing	Applications	Features & Benefits	Usage Guidelines	Estimation
<b>MasterEmaco® S 650 : Thixotropic, High-strength, Cementitious patching mortar</b> <span style="float: right;">■ ■</span>				
25 Kg moisture resistant bag	<ul style="list-style-type: none"> <li>■ Concrete pavements</li> <li>■ Runways and Aprons</li> <li>■ Parking area &amp; Garages</li> <li>■ Warehouse &amp; Factories</li> </ul>	<ul style="list-style-type: none"> <li>■ Fast setting, rapid hardening</li> <li>■ Comp. St., &gt; 15 MPa in 3 hour</li> <li>■ Excellent bond strength</li> <li>■ Crack resistant formula</li> </ul>	Mix with 2.75 litre of water using slow speed drill for at least 5 minutes to lumps free consistency. Place, float and finish with trowel.	45 kg/m <sup>2</sup> at 25mm thick. (Yield: 14.5 litre/pack)
<b>Wabocrete II: Two Component Polyurethane Based Elastomeric Concrete</b> <span style="float: right;">■ ■</span>				
39.1 Kg	<ul style="list-style-type: none"> <li>■ Airport Hangar, Apron and Runway Repairs.</li> <li>■ Expansion Joint Shoulder Repairs.</li> <li>■ Heavy Engineering Floor Repairs.</li> </ul>	<ul style="list-style-type: none"> <li>■ Rapid Installation &amp; Fast Curing.</li> <li>■ High Impact Resistance.</li> <li>■ Good Resilience.</li> <li>■ Available in Black and Grey Colors</li> </ul>	Please consult our local representative for detailed method statements, customized to your project requirements.	Please Refer to the datasheet.
<b>MasterEmaco® S 488: Thixotropic, High-strength, Cementitious patching mortar</b> <span style="float: right;">■ ■ ■</span>				
25 Kg moisture resistant bag	Patch repairs to medium-high strength concrete structures (> M35)	<ul style="list-style-type: none"> <li>■ Thixotropic, non-sag</li> <li>■ High Comp. st. &gt; 70 MPa</li> <li>■ Excellent bond strength</li> <li>■ Crack resi., Fibre reinforced</li> </ul>	Mix with 3.5 litre of water using slow speed drill for at least 3 minutes to lumps free consistency. Place, float and finish with trowel.	52 kg/m <sup>2</sup> at 25mm thick. (Yield: 12.4 litre/pack)
<b>MasterEmaco® S 348: Thixotropic, Economical, Cementitious patching mortar</b> <span style="float: right;">■ ■ ■</span>				
25 Kg moisture resistant bag	Patch repairs of low - medium strength concrete structures (< M45)	<ul style="list-style-type: none"> <li>■ Thixotropic, non-sag</li> <li>■ Comp. st. &gt; 40 MPa</li> <li>■ Excellent bond strength</li> <li>■ Crack resi., Fibre reinforced</li> </ul>	Mix with 3.5 litre of water using slow speed drill for at least 3 minutes to lumps free consistency. Place, float and finish with trowel.	50 kg/m <sup>2</sup> at 25mm thick. (Yield: 12.6 litre/pack)
<b>MasterEmaco® S 340: Cementitious micro-concrete</b> <span style="float: right;">■ ■ ■</span>				
25 Kg moisture resistant bag	Form & fill, volume repairs of low - medium strength structures (< M40)	<ul style="list-style-type: none"> <li>■ Comp. st. &gt; 40 MPa</li> <li>■ Economical design</li> <li>■ Medium modulus design</li> </ul>	Mix with 3.5 litre of water using slow speed drill for at least 3 minutes to lumps free consistency. Form and pour in place using head.	50 kg/m <sup>2</sup> at 25mm thick. (Yield: 12.6 litre/pack)
<b>MasterEmaco® S 466: Dual-shrinkage compensated, Cementitious micro-concrete</b> <span style="float: right;">■ ■ ■</span>				
25 Kg moisture resistant bag	Form & fill, volume repairs of medium high strength structures (> M35)	<ul style="list-style-type: none"> <li>■ High Comp. st. &gt; 65 MPa</li> <li>■ Precision make</li> <li>■ High early strengths</li> <li>■ High modulus design</li> </ul>	Mix with 3.5 litre of water using slow speed drill for at least 3 minutes to lumps free consistency. Form and pour in place using head.	52 kg/m <sup>2</sup> at 25mm thick. (Yield: 12.4 litre/pack)
<b>MasterEmaco® S 346: Dual-shrinkage compensated, Cementitious micro-concrete</b> <span style="float: right;">■ ■ ■</span>				
25 Kg moisture resistant bag	Form & fill, volume repairs of low - medium strength structures (< M40)	<ul style="list-style-type: none"> <li>■ Precision make</li> <li>■ Comp. st. &gt; 40 MPa</li> <li>■ Economical design</li> <li>■ Medium modulus design</li> </ul>	Mix with 3.5 litre of water using slow speed drill for at least 3 minutes to lumps free consistency. Form and pour in place using head.	50 kg/m <sup>2</sup> at 25mm thick. (Yield: 12.6 litre/pack)
<b>MasterFlow® 46 UW : Cementitious micro-concrete for under-water repairs</b> <span style="float: right;">■ ■</span>				
25 Kg moisture resistant bag	Form & fill, volume repairs of under-water concrete structures.	<ul style="list-style-type: none"> <li>■ Very low wash-out, &lt; 5%</li> <li>■ High Comp. st. &gt; 50 MPa</li> <li>■ Precision make</li> <li>■ Thixotropic, pumpable design</li> </ul>	Mix with 4.5 litre of water using slow speed drill for at least 5 minutes to lumps free consistency. Form and pour in place using head.	75 bags/m <sup>3</sup> (Yield: 13.4 litre/pack)
<b>MasterEmaco® S 810 : Dry-spray applied, cementitious micro-concrete</b> <span style="float: right;">■ ■</span>				
25 Kg moisture resistant bag	Large surface area repairs of concrete structures using dry-spray technique.	<ul style="list-style-type: none"> <li>■ High Comp. st. &gt; 40 Mpa</li> <li>■ Consistent performance</li> <li>■ High build, up to 100mm/layer</li> <li>■ Excellent bond, low rebound</li> </ul>	Spray apply on pre-wetted surface using dry-process shotcrete machine, maintain w/p ratio at 0.08-0.09 for best results.	120 Kg/m <sup>2</sup> at 50 mm thickness.
<b>MasterEmaco® 131 : Acrylic polymer modifier for site-batched mortar &amp; bonding aid</b> <span style="float: right;">■ ■ ■</span>				
1, 5, 20 Kg	<ul style="list-style-type: none"> <li>■ Repair &amp; Reprofiling</li> <li>■ Bonding agent/slurry</li> <li>■ Primer for underlays</li> <li>■ Curing aid</li> </ul>	<ul style="list-style-type: none"> <li>■ Enhances the flexural &amp; tensile strengths of composite mix</li> <li>■ Enhances bond strengths</li> <li>■ Reduces permeability</li> </ul>	Stir well before use. Mix with cement & sand (1:5:15) to produce site-batched patching mortar. Refer to datasheet for other use.	Please refer to datasheet for detail of usage and estimates.
<b>MasterEmaco® SBR 2: SBR latex polymer for site-batched mortar &amp; bonding aid</b> <span style="float: right;">■ ■ ■</span>				
1, 5, 20 Kg	<ul style="list-style-type: none"> <li>■ Repair &amp; Reprofiling</li> <li>■ Bonding agent/slurry</li> <li>■ Cementitious overlays</li> <li>■ Curing aid</li> </ul>	<ul style="list-style-type: none"> <li>■ Enhances the flexural &amp; tensile strengths of composite mix</li> <li>■ Enhances bond strengths</li> <li>■ Improves Water Resistance</li> </ul>	Stir well before use. Mix with cement & sand (1:5:15) to produce site-batched patching mortar. Refer to datasheet for other use.	Please refer to datasheet for detail of usage and estimates.

Packing	Applications	Features & Benefits	Usage Guidelines	Estimation
<b>MasterEmaco® SBR ECO : Environment Friendly SBR latex polymer for site-batched mortar &amp; bonding aid</b> ■ ■ ■				
1, 5, 20 Kg	<ul style="list-style-type: none"> <li>Repair &amp; Reprofiling</li> <li>Bonding agent/slurry</li> <li>Cementitious overlays</li> <li>Curing aid</li> </ul>	<ul style="list-style-type: none"> <li>Environment Friendly, Safe to Handle</li> <li>Enhances the flexural &amp; tensile strengths of composite mix</li> <li>Enhances bond strengths</li> <li>Improves Water Resistance</li> </ul>	Stir well before use. Mix with cement & sand (1:5:15) to produce site-batched patching mortar. Refer to datasheet for other use.	Please refer to datasheet for detail of usage and estimates.
<b>MasterBrace® FRP : FRP Composite system with choice of Glass, Carbon &amp; Aramid</b> ■ ■ ■				
Please refer datasheet	<ul style="list-style-type: none"> <li>To increase live loads</li> <li>Upgrade of bridges</li> <li>Earthquake retrofitting</li> <li>Errors in construction</li> </ul>	<ul style="list-style-type: none"> <li>Light weight, Quick to install</li> <li>Widest range to choose from</li> <li>Large Job References</li> <li>Design &amp; on-site support</li> </ul>	In-site composite is formed using saturant and fibres or ready to use composite is fixed using adhesive. Refer to datasheet for details.	Please refer to datasheet for detail of usage and estimates.

## PROTECTION SYSTEMS

<b>MasterProtect® 300 : High-elongation, crack-bridging, acrylic coating</b> ■ ■ ■				
20 Kg	<ul style="list-style-type: none"> <li>Bridges &amp; flyovers</li> <li>Marine structures</li> <li>Villas in marine zone</li> <li>Sloping roofs</li> </ul>	<ul style="list-style-type: none"> <li>Elongation &gt; 300 %</li> <li>Excellent in Anti-carbonation</li> <li>Excellent UV Stability</li> <li>Solvent/VOC Free</li> </ul>	Prime the substrate using MasterSeal 399, Stir well before use. Apply using spray/roller/brush in 2-3 coats to even finish.	18 - 22 m <sup>2</sup> /pail at 300µ DFT, in 2 coats.

<b>MasterSeal® 878 : Rapid curing, chemical resistant, polyurea waterproofing membrane</b> ■ ■				
200Kg Drum	<ul style="list-style-type: none"> <li>Water containment areas.</li> <li>Primary &amp; Secondary containment tanks</li> <li>Waste water treatment tanks</li> <li>Protection &amp; waterproofing of infrastructures</li> </ul>	<ul style="list-style-type: none"> <li>Fast reacting - Rapid installation.</li> <li>Does not run when applied on vertical surfaces</li> <li>Seamless - No risk of leaky seams and laps.</li> <li>Spray applied and easy application on complex shapes.</li> <li>Fully bonded - Eliminates water collection behind membrane even if punctured.</li> </ul>	Please consult our local office for customised method statement to your site requirements	Please refer the datasheet or consult local representative

<b>MasterSeal® 888 : Rapid curing, chemical resistant, polyurea waterproofing membrane</b> ■ ■				
200Kg Drum	<ul style="list-style-type: none"> <li>Sewage treatment tanks</li> <li>Raw water and sewer lines</li> <li>Industrial effluent treatment tanks</li> <li>Industrial drainage channels</li> </ul>	<ul style="list-style-type: none"> <li>Fast reacting - Rapid installation.</li> <li>Does not run when applied on vertical surfaces</li> <li>Seamless - No risk of leaky seams and laps.</li> <li>Spray applied and easy application on complex shapes.</li> <li>Fully bonded - Eliminates water collection behind membrane even if punctured.</li> </ul>	Please consult our local office for customised method statement to your site requirements	Please refer the datasheet or consult local representative

<b>MasterSeal® 898 : Rapid curing, chemical resistant, pure polyurea waterproofing membrane</b> ■ ■				
200Kg Drum	<ul style="list-style-type: none"> <li>Protection of infrastructures</li> <li>Raw water and sewer facilities</li> <li>Industrial effluent treatment tanks</li> <li>Pipeline protection and restoration</li> </ul>	<ul style="list-style-type: none"> <li>Fast reacting - Rapid installation.</li> <li>Does not run when applied on vertical surfaces</li> <li>Seamless - No risk of leaky seams and laps.</li> <li>Spray applied and easy application on complex shapes.</li> <li>Fully bonded - Eliminates water collection behind membrane even if punctured.</li> </ul>	Please consult our local office for customised method statement to your site requirements	Please refer the datasheet or consult local representative

<b>MasterProtect® 200 : Anti-carbonation, crack bridging, acrylic coating</b> ■ ■ ■				
20 Kg	<ul style="list-style-type: none"> <li>Villas &amp; bungalows</li> <li>Apartment buildings</li> <li>Industrial Buildings</li> <li>Parking &amp; toll plaza</li> </ul>	<ul style="list-style-type: none"> <li>Elongation &gt; 200 %</li> <li>Good Anti-carbonation</li> <li>Solvent/VOC Free</li> <li>Available in attractive colour</li> </ul>	Prime the substrate using MasterSeal 399, Stir well before use. Apply using spray/roller/brush in 2-3 coats to even finish.	40 m <sup>2</sup> /pail at 150µ DFT, in 2 coats.

<b>MasterSeal® 260 : 2-K, Aliphatic PU based, protective coating</b> ■				
5 litre ready to use pack	<ul style="list-style-type: none"> <li>Clean room walls</li> <li>Industrial buildings</li> <li>Hospital &amp; Laboratories</li> <li>Low RH area</li> </ul>	<ul style="list-style-type: none"> <li>Good chemical resistant</li> <li>Resistant to fungal growth</li> <li>Excellent UV stability</li> <li>Good scratch resistance</li> </ul>	Stir & mix well before use. Apply using spray/roller / brush in 2-3 coats to even finish. No primer is required on concrete/masonry.	20 - 22 m <sup>2</sup> /pack at 100µ DFT, in 2 coats.

<b>MasterProtect® 1351 : One-part, Moisture-curing PU based, wall coating</b> ■ ■				
5 kg pail	<ul style="list-style-type: none"> <li>Clean room walls</li> <li>Hospital &amp; Laboratories</li> <li>Food processing area</li> <li>Industrial buildings</li> </ul>	<ul style="list-style-type: none"> <li>Resistant to fungal growth</li> <li>Washable</li> <li>Breathable</li> <li>One part, easy to use</li> </ul>	Stir well before use. Apply using spray/roller / brush in 2-3 coats to even finish. No primer is required.	13 - 15 m <sup>2</sup> /pack at 80µ DFT, in 2 coats.

<b>MasterProtect® 180 : Solvent-free, potable grade, High-build, epoxy coating</b> ■ ■ ■				
5 kg ready to use pack	<ul style="list-style-type: none"> <li>Clean room walls</li> <li>Potable water tanks</li> <li>Food processing area</li> <li>Chemical processing</li> </ul>	<ul style="list-style-type: none"> <li>Excellent chemical resistance</li> <li>Potable grade, Taint free</li> <li>High-build, tough &amp; long lasting</li> <li>Effective gas/vapour barrier</li> </ul>	Stir & mix well before use. Apply using spray/roller / brush in 2 coats to even finish. No primer is required.	8 m <sup>2</sup> /pack at 400µ DFT, in 2 coats.

<b>MasterProtect® 1812 : Solvent-free, High-build, Pitch-epoxy coating</b> ■ ■ ■				
6 & 20 kg ready to use pack	<ul style="list-style-type: none"> <li>Foundation protection</li> <li>Splash zone in marine conditions</li> <li>Sewerage plant/line</li> </ul>	<ul style="list-style-type: none"> <li>High-build, &gt;300µ DFT</li> <li>Excellent chemical resistance</li> <li>Tough &amp; durable finish</li> <li>Effective gas/vapour barrier</li> </ul>	Stir & mix well before use. Apply using roller/brush in 2 coats to even finish. No primer is required.	2 m <sup>2</sup> /kg at 300µ DFT, in 2 coats.

<b>MasterProtect® 8000CI : Silane based total corrosion control treatment</b> ■ ■				
28, 205 Litre	<ul style="list-style-type: none"> <li>Chloride infused conc.</li> <li>Marine structures</li> <li>Low cover concrete</li> <li>Buildings of importance</li> </ul>	<ul style="list-style-type: none"> <li>Measurable &amp; significant reduction in corrosion activities</li> <li>&gt; 90% reduction in currents</li> <li>Re-passivates rebar</li> </ul>	Expose substrate pores for effective penetration. Stir well before use. Spray apply 600 ml/m <sup>2</sup> in 2 - 3 coats wet-on-wet.	600 ml/m <sup>2</sup> in 2-4 coats.



Packing	Applications	Features & Benefits	Usage Guidelines	Estimation
<b>MasterProtect® H 1100 : Water Repellant Impregnation For Mineral Construction Materials In Out Door Use</b> ■ ■				
20 Litre & 200 Litre Drums	<ul style="list-style-type: none"> <li>■ All concrete surfaces.</li> <li>■ Masonry surfaces.</li> <li>■ External &amp; Internal Applications.</li> </ul>	<ul style="list-style-type: none"> <li>■ Very Good Penetration.</li> <li>■ Non film forming.</li> <li>■ Water Vapor Permeable.</li> <li>■ Highly Alkali Resistant.</li> </ul>	Expose substrate pores for effective penetration. Stir well before use. Spray apply in two to three coats.	150 to 250 ml/m <sup>2</sup> Coverage depends upon the porosity. Do a sample patch for estimation.

## TILE ADHESIVES & GROUTS

### MasterTile® 15 : Coloured, Cementitious, non-shrink, tile joint grout

1 & 5 kg moisture resistant bag	<ul style="list-style-type: none"> <li>■ Ceramic tiles</li> <li>■ Mosaics</li> <li>■ Natural stones</li> </ul>	<ul style="list-style-type: none"> <li>■ Available in wide colours</li> <li>■ Small pack, ready to use</li> <li>■ Fast drying ■ Enable smooth finish</li> </ul>	Mix with water to paste consistency and apply with rubber float allow to dry and finish with wet-sponge.	4 m <sup>2</sup> per kg 150 x 150 mm tile size.
---------------------------------	--	---	--	---

### MasterTile® 25 : Cementitious, Polymer Modified General Purpose Tile Adhesive

25 kg moisture resistant bag	<ul style="list-style-type: none"> <li>■ Suitable for ceramic tiles conforming to</li> <li>■ IS13712(2006) type Ia, IIb and III tiles.</li> </ul>	<ul style="list-style-type: none"> <li>■ Conforms to IS 15477:2004 Type 1 classification</li> <li>■ Economical Formula</li> <li>■ Thin bed application</li> </ul>	Mix with 5.25 ltrs water to a lump free consistency Apply with notch trowel to 3-6mm thickness	5-5.25sq.mtrs per bag at 3mm bedding thickness
------------------------------	---	---	--	--

### MasterTile® 30 : Cementitious, Highly Polymer Modified Cementitious Tile Adhesive

25 kg moisture resistant bag	<ul style="list-style-type: none"> <li>■ Suitable for ceramic tiles conforming to</li> <li>■ IS13712(2006) type Ib, IIa, IIb</li> </ul>	<ul style="list-style-type: none"> <li>■ Conforms to IS 15477:2004 Type 2 classification</li> <li>■ Excellengt grab for vertical aplication</li> <li>■ thick or thin bed application</li> </ul>	Mix with 5.25 ltrs water to a lump free consistency Apply with notch trowel to 3-6mm thickness	5-5.25sq.mtrs per bag at 3mm bedding thickness
------------------------------	---	---	--	--

### MasterTile® 100 : High performance epoxy tile joint grout

3 kg ready to use pack	<ul style="list-style-type: none"> <li>■ Kitchens &amp; catering</li> <li>■ Food &amp; Beverages</li> <li>■ Chemical process area</li> <li>■ Workshops &amp; garages</li> </ul>	<ul style="list-style-type: none"> <li>■ Water miscible: No stains</li> <li>■ Non-tainting and non-toxic</li> <li>■ Easy to clean and hygienic</li> <li>■ Impermeable - watertight</li> </ul>	Please refer the product datasheet for the application instructions.	Please refer product datasheet.
------------------------	---	---	--	---------------------------------

### MasterTile® 250 : High performance epoxy tile adhesive

5 kg ready to use pack	<ul style="list-style-type: none"> <li>■ Kitchens &amp; catering</li> <li>■ Food &amp; Beverages</li> <li>■ Chemical process area</li> <li>■ Workshops &amp; garages</li> </ul>	<ul style="list-style-type: none"> <li>■ Water miscible: No stains</li> <li>■ Non-tainting and non-toxic</li> <li>■ Easy to clean and hygienic</li> <li>■ Impermeable - watertight</li> </ul>	Please refer the product datasheet for the application instructions.	Please refer product datasheet.
------------------------	---	---	--	---------------------------------

### MasterTile® 400 : High Performance, Polymer Modified Cementitious Grey Colored Tile Adhesive with Extended Open Time & Reduced Slip

25 kg moisture resistant bag	<ul style="list-style-type: none"> <li>■ Suitable for ceramic tiles conforming to</li> <li>■ IS13712(2006) type Ia, Ib, IIa, IIb tiles</li> </ul>	<ul style="list-style-type: none"> <li>■ Conforms to EN 12004:2007 C2 TE classification</li> <li>■ Excellengt grab for vertical aplication</li> <li>■ Suitable for large format tiles</li> <li>■ Suitable for non-moisture sensitive natural stones</li> </ul>	Mix with w/p ratio of 0.24-0.28 and apply with notch trowel to 3-6mm thickness	Notch size 6mm tk-2.5kg/sq.mtr Notch size 8mm tk-3.2kg/sq.mtr Notch size 10mm tk-4kg/sq.mtr
------------------------------	---	--	--	---

### MasterTile® 500 : High Performance, Polymer Modified Cementitious White Colored Tile Adhesive with Extended Open Time & Reduced Slip

25 kg moisture resistant bag	<ul style="list-style-type: none"> <li>■ Suitable for ceramic tiles conforming to</li> <li>■ IS13712(2006) type Ia, Ib, IIa, IIb tiles</li> </ul>	<ul style="list-style-type: none"> <li>■ Conforms to EN 12004:2007 C2 TE classification</li> <li>■ Excellengt grab for vertical aplication</li> <li>■ Suitable for large format tiles</li> <li>■ Suitable for non-moisture sensitive natural stones</li> </ul>	Mix with w/p ratio of 0.24-0.28 and apply with notch trowel to 3-6mm thickness	Notch size 6mm tk-2.5kg/sq.mtr Notch size 8mm tk-3.2kg/sq.mtr Notch size 10mm tk-4kg/sq.mtr
------------------------------	---	--	--	---

### MasterTile® FLX 24 : Deformable multi purpose tile adhesive for all ceramic coverings and substrates

25 kg moisture resistant bag	<ul style="list-style-type: none"> <li>■ Suitable for ceramic tiles conforming to</li> <li>■ IS13712(2006) type Ia, Ib, IIa, IIb tiles and for application on-flexible substartes</li> </ul>	<ul style="list-style-type: none"> <li>■ Conforms to EN 12004:2007 C2 TE classification</li> <li>■ Suitable for application over flexible substrates</li> <li>■ Excellengt grab for vertical aplication</li> <li>■ Suitable for large format tiles</li> <li>■ Suitable for non-moisture sensitive natural stones</li> </ul>	Mix with 6-6.25ltrs water to alump free consistency	Notch size 4mm tk-1.5kg/sq.mtr Notch size 6mm tk-2.1kg/sq.mtr Notch size 8mm tk-2.7kg/sq.mtr Notch size 10mm tk-3.4kg/sq.mtr
------------------------------	--	---	---	---

### MasterSeal® 561 : 1 Component, Flexible, Waterproofing Mastic System For Under Ceramic Coverings & Wet Areas

8 Kg Pail	<ul style="list-style-type: none"> <li>■ For wet areas such as bath rooms.</li> <li>■ Moisture sensitive absorbent surfaces.</li> <li>■ For Indoor use on walls, floors etc.</li> </ul>	<ul style="list-style-type: none"> <li>■ Ready to Use, Easy to apply by brush.</li> <li>■ Crack Bridging Capacity.</li> <li>■ Flexible, takes thermal movements.</li> <li>■ Solvent free.</li> </ul>	Please consult our local representative for detailed method statements, customized to your project requirements.	Please Refer to the datasheet.
-----------	---	--	--	--------------------------------

Packing	Applications	Features & Benefits	Usage Guidelines	Estimation
<b>JOINT SEALANTS &amp; SEALS</b>				
<b>MasterSeal® 474 : One-part PU sealant for Expansion joints in floors</b>				
600 ml pro-pack	<ul style="list-style-type: none"> <li>Industrial floors</li> <li>Warehouses &amp; factory</li> <li>Packing areas</li> <li>Electronics assembly</li> </ul>	<ul style="list-style-type: none"> <li>Elongation &gt; 450 %</li> <li>Shore A hardness of 30</li> <li>Tough, durable seal</li> <li>Single part, easy to use</li> </ul>	Clean joint edges to dust-free. Apply using 600 ml standard gun. Pour and tool to level surface. Use primer for wet-area joints.	2 rm per pro-pack for 25 x 12 mm joint.
<b>MasterSeal® 472 : General-purpose, one-part PU sealant for Expansion joints</b>				
600 ml pro-pack	<ul style="list-style-type: none"> <li>Buildings &amp; Factories</li> <li>Interior &amp; Exterior</li> <li>Stone cladding</li> <li>External facades</li> </ul>	<ul style="list-style-type: none"> <li>Elongation &gt; 600 %</li> <li>Shore A hardness of 15-25</li> <li>Primer is not essential</li> <li>Single part, easy to use</li> </ul>	Clean joint edges to dust-free. Apply using 600 ml standard gun. Pour and tool to level surface. Use primer for joints exposed to water.	2 rm per pro-pack for 25 x 12 mm joint.
<b>MasterSeal® 700i : High performance, elastomeric polysulphide joint sealant</b>				
1 Kg and 4 Kg pack	<ul style="list-style-type: none"> <li>Curtain walls, precast concrete panelling.</li> <li>Dams, reservoirs and water treatment plants.</li> <li>Subways, bridges, culverts and rigid pavements</li> </ul>	<ul style="list-style-type: none"> <li>Resistant to UV and weathering-durable in exposed conditions.</li> <li>Tough and flexible – withstands traffic.</li> <li>Excellent adhesion to a variety of substrates.</li> <li>Forms watertight seal</li> </ul>	Please refer the product datasheet for the application instructions	Please refer product Datasheet
<b>MasterSeal® 928 : Viscoelastic tape for watertight sealing of joints &amp; crack</b>				
15m roll	<ul style="list-style-type: none"> <li>Corners in wet-area</li> <li>Sealing of roof caps</li> <li>Sealing cracks</li> <li>Connection to metal</li> </ul>	<ul style="list-style-type: none"> <li>Excellent adhesion</li> <li>Can be over coated</li> <li>Good crack bridging capability</li> <li>Easy, fast and economical</li> </ul>	Remove Laitance from the substrate, remove the peel ply and stick the tape on the substrate. Roll with hard rubber roller.	Consider 5% wastage and overlaps
<b>MasterSeal® 930 : Sealing tape for irregular, un-conventional, oversize joints</b>				
Available in various width and thickness	<ul style="list-style-type: none"> <li>Expansion/Seismic jt.</li> <li>Water retaining tanks</li> <li>Basements</li> <li>Podiums &amp; roofs</li> </ul>	<ul style="list-style-type: none"> <li>High elongation, &gt; 600%</li> <li>Suited for &gt; 40 mm wide joints</li> <li>Economical design</li> <li>Quicker installation</li> </ul>	Remove Laitance from the substrate. Use MasterBrace 2200 as adhesive and fix in position. Allow to cure. Refer datasheet.	Consider 5% wastage and overlaps
<b>Aladin® : Pre-formed seal for trafficked expansion joints</b>				
Available for 25, 50, 75, 100 joint width	<ul style="list-style-type: none"> <li>Podium &amp; Parking deck</li> <li>Water retaining tanks</li> <li>Basements &amp; car-park</li> <li>Industrial floors</li> </ul>	<ul style="list-style-type: none"> <li>Watertight seal</li> <li>Supports joint edges</li> <li>Best option for trafficked jt.</li> <li>Quick to install</li> </ul>	Remove Laitance from the substrate. Use Wabo Paste Adhesive to fix in position. Allow to cure. Refer datasheet.	Consider 5% wastage and overlaps
<b>WATERPROOFING</b>				
<b>MasterSeal® 910 : Hydro-swelling water bar for watertight construction joints</b>				
10 x 10 mm (120 rm roll)	<ul style="list-style-type: none"> <li>Construction joints in basement walls, rafts &amp; foundations</li> <li>Water retaining structure</li> </ul>	<ul style="list-style-type: none"> <li>Swells up to 160%</li> <li>Effective in saline water</li> <li>Effective in various chemicals</li> <li>Eliminates need of kicker</li> </ul>	Clean the substrate from Laitance. Fix in place using MasterFlex 610 adhesive glue. Allow glue to cure before concrete placement.	Consider 3% wastage and overlaps.
<b>MasterSeal® 912 : Hydro-swelling paste for watertight construction joints</b>				
310 ml cartridge	<ul style="list-style-type: none"> <li>Irregular joints</li> <li>Pipe inserts</li> <li>Water retaining structure</li> <li>Foundations &amp; basement</li> </ul>	<ul style="list-style-type: none"> <li>Can applied on uneven joints</li> <li>Effective in saline water</li> <li>Easy to form and apply</li> <li>Quick setting, low down-time</li> </ul>	Clean the substrate from Laitance. Apply using standard caulking gun, maintaining uniform bead size of 10mm.	5 running metre per cartridge.
<b>MasterSeal® 909 : Re-injecatble hose for watertight construction joints</b>				
25 & 200 metre combipack	<ul style="list-style-type: none"> <li>Construction joints in basement walls, rafts &amp; foundations</li> <li>Water retaining structure</li> </ul>	<ul style="list-style-type: none"> <li>Permanent access to joints</li> <li>Injection using various resin</li> <li>Measurable water tightness</li> <li>Tough &amp; durable design</li> </ul>	Fix the hose as per the product method statement. Inject the resin using Masterflex 801 or microfine cements, based on purpose.	Consider 3% wastage and overlaps.
<b>MasterSeal® 501 : Crystallization based waterproofing system</b>				
25 kg moisture resistant bag	<ul style="list-style-type: none"> <li>Basement walls &amp; raft</li> <li>Water retaining tanks</li> <li>Wet areas in buildings</li> <li>Inspection/lift pits</li> </ul>	<ul style="list-style-type: none"> <li>Deep penetrative, no damage</li> <li>Irreversible chemical reaction</li> </ul>	Mix with 7 - 8 litre of water to slurry consistency. Apply by brush or dry-shake on the horizontal surface before concrete placement	2 Kg/m <sup>2</sup>
<b>MasterSeal® 505 : Rapid hardening, leak-plugging mortar</b>				
5 kg moisture resistant bag	<ul style="list-style-type: none"> <li>Construction joints</li> <li>Fixing grouting ports</li> <li>Quick relief from leaks</li> <li>Basements &amp; Tanks</li> </ul>	<ul style="list-style-type: none"> <li>Sets &amp; hardens in 2 minutes</li> <li>Crack resistant formula</li> <li>Chloride free</li> <li>Small pack, ready to use</li> </ul>	Mix with sufficient water to malleable consistency. Form a ball and plug in to the leaking point, hold in place till start to harden.	Based on the application types.
<b>MasterSeal® 550 : Polymer modified cementitious waterproofing coating</b>				
6 & 20 kg ready to use pack	<ul style="list-style-type: none"> <li>Balconies</li> <li>Water retaining tanks</li> <li>Sunken area</li> <li>Protection of concrete</li> </ul>	<ul style="list-style-type: none"> <li>Water resistant to 7 bar head</li> <li>Excellent bond strength</li> <li>Protection from corrosion</li> <li>Tough but flexible film</li> </ul>	Mix both the components using slow speed stirrer to lumps-free consistency. Apply using brush in 2 coats at right angle to each other	1.8 kg/m <sup>2</sup> at 1mm thickness

Packing	Applications	Features & Benefits	Usage Guidelines	Estimation
<b>MasterSeal® 551 : Flexible, Polymer modified cementitious waterproofing coating</b> ■ ■ ■				
20 kg ready to use pack	<ul style="list-style-type: none"> <li>Large terraces</li> <li>Parking decks</li> <li>Cantilever balconies</li> <li>Protection of concrete</li> </ul>	<ul style="list-style-type: none"> <li>Good elongation, &gt;40%</li> <li>Water resistant to 7 bar head</li> <li>Excellent bond strength</li> <li>Protects from corrosion</li> </ul>	Mix both the components using slow speed stirrer to lumps-free consistency. Apply using brush in 2 coats at right angle to each other	1.85 kg/m <sup>2</sup> at 1mm thickness
<b>MasterSeal® 511 : Acrylic polymer for making site-batched waterproof slurry</b> ■ ■ ■				
20 kg	<ul style="list-style-type: none"> <li>Waterproof slurry coat</li> <li>Protection coat</li> <li>Fairing slurry-coat</li> </ul>	<ul style="list-style-type: none"> <li>Economical &amp; easy to use</li> <li>Improves adhesion of slurry</li> <li>Imparts toughness to slurry</li> <li>Improves cracking resistance</li> </ul>	Stir well before use. Mix with cement or cement and sand. Apply by brush in 2 - 3 coats to even and smooth finish.	0.6 - 0.8 kg/litre of Rheomix 115 in 2 - 3 coats.
<b>MasterSeal® HLM 5000 : Liquid applied, Elastomeric membrane</b> ■ ■				
22.5 kg pail	<ul style="list-style-type: none"> <li>Terraces &amp; balconies</li> <li>Wet-areas</li> <li>Refurbishment works</li> </ul>	<ul style="list-style-type: none"> <li>High elongation, &gt; 700 %</li> <li>Crack bridging capability</li> <li>Complies with ASTM C-836</li> <li>Excellent bond to substrate</li> </ul>	Stir well before use. Apply using roller or pin-screed or trowel to even thickness. Prime the damp substrate using MasterKure 181	14 m <sup>2</sup> per pail at 1mm thickness.
<b>MasterSeal® 700BG : Single-ply PVC waterproofing membrane</b> ■ ■ ■				
2.1m x 20 m roll	<ul style="list-style-type: none"> <li>Rafts, Foundations &amp; retaining walls</li> <li>Cut &amp; cover tunnels</li> </ul>	<ul style="list-style-type: none"> <li>Un-bonded, moves with structure and does not tear</li> <li>Signal layer, damage control</li> <li>Overlaps are tested, fail-safe</li> </ul>	Please consult our local office for customised method statement to your site requirements.	Please refer the datasheet or consult local representative
<b>MasterSeal® 753 THE : Fibre reinforced TPO based synthetic pond liner</b> ■				
2.1m x 20 m roll	<ul style="list-style-type: none"> <li>Artificial lakes</li> <li>Water reservoirs</li> <li>Canals &amp; water tanks</li> <li>Golf courses &amp; gardens</li> </ul>	<ul style="list-style-type: none"> <li>Excellent UV light &amp; weathering resistance</li> <li>High resistance to puncture</li> <li>Resistant to root penetration</li> </ul>	Please consult our local office for customised method statement to your site requirements.	Please refer the datasheet or consult local representative
<b>MasterPren® TGE : Glass fibre reinforced TPO, waterproofing membrane</b> ■ ■				
2.1m x 25 m roll	<ul style="list-style-type: none"> <li>Exposed roof</li> <li>Roof gardens</li> <li>Podium &amp; parking deck</li> <li>Refurbishing old roof</li> </ul>	<ul style="list-style-type: none"> <li>Excellent UV light &amp; weathering resistance</li> <li>High resistance to puncture</li> <li>Resistant to root penetration</li> </ul>	Please consult our local office for customised method statement to your site requirements.	Please refer the datasheet or consult local representative
<b>MasterSeal® 750 TPE : Polyester fibre reinforced TPO, waterproofing membrane</b> ■ ■				
2.1m x 25 m roll	<ul style="list-style-type: none"> <li>Exposed roof</li> <li>Mechanically fasten roof</li> <li>Folded plates roofs</li> <li>Refurbishing old roof</li> </ul>	<ul style="list-style-type: none"> <li>Excellent UV light &amp; weathering resistance</li> <li>High resistance to puncture</li> <li>Signal layer, damage control</li> </ul>	Please consult our local office for customised method statement to your site requirements.	Please refer the datasheet or consult local representative
<b>MasterSeal® Roof : High-Performance, PU based, Spray/Liquid applied membrane</b> ■ ■				
Please refer the datasheet	<ul style="list-style-type: none"> <li>Terraces &amp; balconies</li> <li>Retaining walls</li> <li>Complex roof shapes</li> <li>Refurbishment works</li> </ul>	<ul style="list-style-type: none"> <li>Customised system built-ups</li> <li>Available in attractive colour</li> <li>Fast-track refurbishment</li> <li>High performance, long life</li> </ul>	Please consult our local representative for detailed method statements, customised to your project requirements.	Please refer the datasheet and method statements.
<b>MasterSeal® Traffic : High-Performance, parking deck protection system</b> ■				
Please refer the datasheet	<ul style="list-style-type: none"> <li>Podiums &amp; ramps</li> <li>Underground car-parks</li> <li>Intermediate decks</li> <li>Fire tender lanes</li> </ul>	<ul style="list-style-type: none"> <li>Customised system built-ups</li> <li>Available in attractive colour</li> <li>Fast-track refurbishment</li> <li>High performance, long life</li> </ul>	Please consult our local representative for detailed method statements, customised to your project requirements.	Please refer the datasheet and method statements.

## WATERTIGHT INJECTION SYSTEMS

<b>MasterRoc® MP355 1K: One-Component, PU Injection Foam</b> ■ ■ ■				
27.5 kg pack	<ul style="list-style-type: none"> <li>Basements &amp; tanks</li> <li>Pre-injection/ stabilization of jointed rock</li> <li>Sealing of running leaks</li> </ul>	<ul style="list-style-type: none"> <li>Reacts in moist surroundings</li> <li>Good bonding to wet surfaces</li> <li>High foam factor: 25 - 30 ca</li> <li>Adjustable reaction times</li> </ul>	Select and mix required amount of accelerator component and stir. Inject using 1-K pump as per application guidelines.	Please consult our local representative
<b>MasterRoc® MP355 A3 : Two-Component, PU Injection Foam</b> ■ ■ ■				
Please refer the datasheet	<ul style="list-style-type: none"> <li>Control of high volume water ingress</li> <li>Rock/soil stabilization</li> <li>Void filling</li> </ul>	<ul style="list-style-type: none"> <li>Fast reaction, quick control</li> <li>Structurally strong and rigid</li> <li>Alternative accelerators for site specific injection design</li> </ul>	Please consult our local representative for detailed method statements, customised to your project requirements.	Please consult our local UGC representative
<b>MasterSeal® 901 : Hydro-swelling resin for watertight sealing of cracks</b> ■ ■ ■				
5.522 & 22.066 kg pack	<ul style="list-style-type: none"> <li>Leakages in concrete</li> <li>Basements &amp; Rafts</li> <li>Water retaining tanks</li> <li>Cut and cover sections</li> </ul>	<ul style="list-style-type: none"> <li>Low viscous, deep penetration</li> <li>Excellent adhesion</li> <li>Re-swelling factor &gt;2.5 times</li> <li>Flexible &amp; durable seal</li> </ul>	Please consult our local representative for detailed method statements, customised to your project requirements.	Please consult our local representative



Packing	Applications	Features & Benefits	Usage Guidelines	Estimation
<b>MasterRoc® 301/302 : low-viscous, highly reactive, hydrophilic acrylate resin</b> ■				
Please refer the datasheet	<ul style="list-style-type: none"> <li>■ Consolidation of soil</li> <li>■ Rock stabilization</li> <li>■ Curtain grouting</li> <li>■ Acrylamide free</li> </ul>	<ul style="list-style-type: none"> <li>■ Low viscosity, &lt; 7 mPa.S</li> <li>■ Adjustable gel time</li> <li>■ Potable, Certified by NSF</li> <li>■ Excellent bond to wet surface</li> </ul>	Please consult our local representative for detailed method statements, customised to your project requirements.	Please consult our local UGC representative
<b>MasterRoc® MP 650 : Fast setting, microfine-cement for rock/soil injection</b> ■ ■ ■				
25 kg bag	<ul style="list-style-type: none"> <li>■ Tunnel, mines, caverns</li> <li>■ Ground stabilisation</li> <li>■ Contact grouting</li> <li>■ Void filling in concrete</li> </ul>	<ul style="list-style-type: none"> <li>■ Good penetration depths</li> <li>■ Stable consistency</li> <li>■ 94% particles &lt;15µ size</li> <li>■ Economical to use</li> </ul>	Mix 1:1 with water using colloidal mixer/paddle mixer, admix with Rheobuild 2000PF for best dispersion.	Please consult our local UGC representative
<b>OTHER TUNNELING/MINING PRODUCTS</b>				
<b>MasterSeal® 845: Sprayed, Super-skin for weathering protection of rocks</b> ■				
PI refer datasheet	Faster alternative to mesh/screen protection	<ul style="list-style-type: none"> <li>■ Ready to use, quick to deploy</li> <li>■ Thin and easy to apply</li> </ul>	Please consult our local UGC representative	Please refer datasheet
<b>MasterSeal® 345: Spray applied waterproofing membrane for composite shell linings</b> ■				
20 kg bag	<ul style="list-style-type: none"> <li>■ Replacement of waterproofing sheet membranes</li> <li>■ Composite shell linings</li> </ul>	<ul style="list-style-type: none"> <li>■ Ready to use, quick to deploy</li> <li>■ Thin and easy to apply</li> </ul>	Please consult our local UGC representative	Please refer datasheet
<b>MasterRoc® SLF30/41: Soil conditioning foam for Tunnel boring machine</b> ■ ■				
200 litre	<ul style="list-style-type: none"> <li>■ Shielded TBM/EPBM</li> <li>■ Soft ground tunneling</li> </ul>	<ul style="list-style-type: none"> <li>■ Improves soil behavior</li> <li>■ Easy mucking</li> </ul>	Please refer the product datasheet	2 - 4 % solution in water
<b>MasterRoc® SL P1: Liquid polymer for soil conditioning with TBM</b> ■				
<b>MasterRoc® TSG 6/ TSG7: Tail Sealant for Shielded Tunnel boring machine</b> ■				
<b>MasterRoc® ACP 143: Anti-clay polymer for earth pressure Tunnel boring machine</b> ■				

® = registered trademark of BASF group in many countries

## About BASF

At BASF, we create chemistry – and have been doing so for 150 years. Our portfolio ranges from chemicals, plastics, performance products and crop protection products to oil and gas. As the world's leading chemical company, we combine economic success with environmental protection and social responsibility. Through science and innovation, we enable our customers in nearly every industry to meet the current and future needs of society. Our products and solutions contribute to conserving resources, ensuring nutrition and improving quality of life. We have summed up this contribution in our corporate purpose: We create chemistry for a sustainable future. BASF had sales of over €74 billion in 2014 and around 113,000 employees as of the end of the year. BASF shares are traded on the stock exchanges in Frankfurt (BAS), London (BFA) and Zurich (AN). Further information on BASF is available on the Internet at [www.basf.com](http://www.basf.com).

## About BASF India

BASF has successfully partnered India's progress for over a century, with 13 of BASF's 14 global businesses maintaining a local presence in India today. BASF in India has 2,186 employees at about 20 production sites & sales offices and R&D centers in Mumbai and Mangalore. In 2014, BASF registered sales of €1.1 billion to customers in India

## About Construction Chemicals Division

BASF's Construction Chemicals division offers advanced chemicals solutions for new construction, maintenance, repair and renovation of structures: Our comprehensive portfolio encompasses concrete admixtures, cement additives, chemical solutions for underground construction, waterproofing systems, sealants, concrete repair & protection systems, performance grouts, performance flooring systems, tile fixing systems, expansion control systems and wood protection solutions.

The Construction Chemicals division's about 5,400 employees form a global community of construction experts. To solve our customers' specific construction challenges from conception through to completion of a project, we combine our know-how across areas of expertise and regions and draw on the experience gained in countless construction projects worldwide. We leverage global BASF technologies, as well as our in-depth knowledge of local building needs, to develop innovations that help make our customers more successful and drive sustainable construction.

The division operates production sites and sales centers in more than 50 countries and achieved sales of about €2.1 billion in 2014.

# Selective list of customers

## PROJECTS

- 2<sup>nd</sup> Vivekananda Bridge
- Alan Duhangan HEP
- Bandra Worli Sea Link
- Bangalore Inter. Airport
- Bhaglihar Hydro Power
- BHAVINI, Kalpakkam
- Chennai by-pass (NHAI)
- Chennai ICTP
- Cochin Port Trust
- CPCL Desalination
- Delhi Metro Rail Corp.
- Dhulhasti Hydro Power
- Ennore Port
- Enron LNG Terminal
- Enron Power Project
- Gangavaram Port Trust
- Haldia Dock Complex
- Hyderabad Inter. Airport
- Indore by-pass Project
- Jammu-Udhampur Rail link
- Jawaharlal Nehru Port Trust
- Kaiga Atomic Power Plant
- Kandla Port Trust
- Khimti Hydro Electric Power
- Kol Dam (NTPC)
- Kolkatta Metro Rail Project
- Kolkatta Port Trust
- Kota Atomic Power Plant
- Krishnapatanam Port Co.
- Krishnavaram Port Trust
- Kudankulam Atomic Power
- Larji Hydro Power Project
- Maneri Bhali Power Project
- Mumbai Pune Express Way
- Nathpa Jhakri HEP
- New Mangalore Port Trust
- NHAI: N-S & E-W Corridors
- NHAI: Port Connectivity
- NHAI: Golden Quadrilateral
- NTPC - SAIL PSC
- Parbati Hydropower project
- Port Pipavav
- Purulia Pumped storage
- Reliance Gas Pipeline
- Salal Hydro Power Project
- Sirsi Circle Flyover
- Srisailem Project
- Subhansiri Hydro Power
- Tala Hydro Power
- Teesta Hydro Power
- Tehri Hydro Electric Project
- Udampur-Katra-Baramula Rail link (Northern Railways)
- Uri Hydro Power Plant
- Veligunda Dam
- Vizag LPG Storage Cavern
- Vizag Port Trust
- Vizag Steel Plant

## CONSULTANTS

- Aker Kvaerner
- B. Mehtalia Consultants
- Bechtel India
- CES India
- Chetana Consultants
- Civil Aid Technoclinic
- Civitech Consultants
- Cushman & Wakefield
- Dar Consultants

- Design Tribe India
- Doshi Consultants
- Dulal Mukherjee & Asso.
- E Caliber Consultants
- Engineers India Limited
- Epicons Consultants
- Geo Consults
- HSCC India Limited
- Jacobs H & G
- Jurong Consultants
- M N Dastur & Co.
- Mahindra Raj Consultant
- MECON Limited
- Mehro Consultants
- Potential Services
- RITES Limited
- Roy & Shenoy
- S V Consultants
- S. S. Engg. Consultants
- SEMEC India
- Shirish Patel & Associates
- Sterling Engineering
- STUP Consultants
- Sweco Infrastructure
- Tandon Consultants
- Tata Consulting Engineers
- Y. S. Sane & Associates

## INDUSTRIAL SITES

- 3M India
- Abhishek Mills
- ACC Cement Plant
- Ador Welding Astra
- Zeneca India
- BASF India
- Besser Concrete Systems
- Bharat Electronics Ltd.
- Bhilai Steel Plant
- Bhoshan Power & Steel
- Biocon India
- Biotech Incubation Centre
- Birla Tyres
- Blue Dart Cargo
- Britannia Industries
- Cadbury India
- Cethar Vessels, Trichy
- Chettinad Cement Plant
- Cipla India Limited
- Dali & Samir Engineering
- Dharampal Satyapal Group
- Dr Reddy's Laboratories
- DTS Diamonds
- Ericsson India
- Essar Oil Limited
- Essar Steel Limited
- FCI-OEN Connectors
- Flex Foods
- Flextronics
- Foxconn India
- Fritolay India
- Glaxo Smith Kline
- Godavani Industries
- Goodricke Group
- Hatsun Agroproducts Ltd.
- Havells India
- Hind Agro Honda Motors
- Indian Oil Corporation Ltd.
- Indian School of Business
- ITC Limited
- Jakob Muller India

- JSW Industries
- Jubilant Organosys
- Laird Technologies
- Mahindra Research Valley
- McCain Foods (India)
- Mcleods India
- Medha Servo Drives
- Medreich Cephtech
- Morioku India
- Nestle India
- Nokia India
- Nuclear Fuel Complex
- Orchid Chemicals
- Orient Craft
- PepsiCo India
- Reckitt Benckiser (India)
- Reebok India
- Reliance Communications
- Reliance Industries Ltd.
- Reliance Life science
- Richa Industries
- Rohit Ferrotech
- RR Donnelley Publishing
- RSB Transmissions
- Saguna Poultry Farms
- Sandoz India
- Sanmina SCI India
- Sequent Scientific
- Serum Institute of India
- Stride Arcolab Limited
- Surya Nepal
- Tata BP Solar India
- Tata Motors
- Tata Steel, Jamshedpur
- Tilda Riceland
- TNPL, Karur
- Tyco Electronics
- Ultratech Cements
- United Phosphorus Ltd.
- Vaman Prestressing
- Vedanta, Jharsuguda
- Venus Remedies
- Vishnu Chemicals
- Win Wind Energy India

## BUILDINGS

- Ananya Hospital
- Bagmane Tech Park
- BRB Note Mudran
- Care Hospital, Hyderabad
- Chalet Hotels, Mumbai
- Delhi Public School
- Dell Computers, Hyderabad
- DLF IT Park
- EIH Limited
- Enchey Monastery
- HSBC Bank, Hyderabad
- IJM Raintree, Hyderabad
- Indian Embassy, Kathmandu
- Indian Institute of Tech. (IIT)
- Intel India, Bangalore
- ITC-Welcomgroup Hotels
- Malayala Manorama Press
- Mega Mall, Mumbai
- Microsoft India, Hyderabad
- Motorola India, Hyderabad
- NEIGRIHMS, Shillong
- Olympia Tech Park
- Prime Mall, Mumbai
- Raheja IT Park, Hyderabad

- RMZ Ecospace, Bangalore
- RMZ Millenia, Mumbai
- Satyam SEZ IT Park
- Shangri-La Hotels
- SP Biotech Park
- Taj Group of Hotels
- Taj GVK Hotels, Chennai
- TCS IT Park
- The American Consulates
- The British Consulate
- The British Library
- The Canadian Embassy
- The Imperial Towers
- WIPRO, Chennai

## ARCHITECTS

- Architect Hafeez Contractor
- C. R. Narayana Rao
- DP Architects
- Edifice Architects
- Kapadia Associates
- RSP Architects
- S. K. Designs
- Somaya & Kalappa
- Sundaram Architects
- Thomas Associates
- Venkataramanan Associates
- WS Atkins India
- Zachariah Consultants

## READY-MIX PRODUCERS

- Aakash RMC
- ACC RMX
- Ahlcon RMC
- Ashoka Buildcon
- Basant Betons
- Bhramputra RMC
- Godrej RMC
- IJM Concrete Products
- Lafarge RMC
- MC Duramix
- Neptune RMC
- Ramco RMC
- RDC Concrete
- RMC Readymix India
- Spectra Punj Lloyd
- Trishul Concrete
- UltraTech RMC

## CONTRACTORS

- Abir Infrastructure
- Afcons India
- Ahluwalia Contracts
- ALPINE Bau GmbH
- Ashoka Infrastructures
- B G Shirke Construction
- B. L. Kashyap
- Bumi Geo Engineering
- CCC Limited
- Chawla Techno Consult
- Continental Construction
- Costal Projects
- DLF Laing O' Rourke
- Dodsai India
- DYWIDEG International
- Essar Construction
- Foundation Engineering
- Gammon India Limited
- Gannon Dunkerley & Co.
- Hariharan Foundation
- Hindustan Construction Ltd.

- I R B Limited
- IDEB Projects
- IJM India Infrastructure
- Impregilo Spa
- Ircon International
- ITD Cementation
- Jaiprakash Associates
- JMC Projects India
- Jubilant International
- Kazima Corporation
- Konkan Railways Corp.
- Kunnel Engineers
- Lanco Infratech
- Larsen & Toubro Limited
- Leighton Contractors
- Madhucon Projects
- Maytas Infra
- Mfar Construction
- Mitsui & Co.
- Nagarjuna Construction Co.
- Navyuga Engineering
- Oriental Construction
- Patel Engineering Limited
- Petron Civil Engineering
- Punj Lloyd Limited
- Rithwik Projects
- Samsung Corporation
- Sancheti Infrastructure
- SEW Infrastructures
- Shankaranarayana Const.
- Shapoorji Paloonji & Co
- Simplex Infrastructures
- Skanska International
- SMS Infrastructure
- Soma Enterprises
- Tantia Construction
- UP State Bridge Corp.
- URC Construction
- VA Tech Wabag
- Valecha Engineering
- VSL India
- Zublin International

## DEVELOPERS

- Adarsh Developers
- Ambuja Realty
- Ansal API
- Bengal Shapoorji Housing
- Brigade Group
- Choice Developers
- DLF Limited
- Emmar MGF
- Gati Infrastructure Limited
- GMR Group
- Golden Gate Properties
- GVK Group
- Hiranandani Developers
- India Bulls Group
- K. Raheja Developers
- Kesar Group
- Prestige Group
- Prince Foundation
- Puravankara Projects
- RMZ Group
- Shapoorji Paloonji
- Sheth Developers
- Sobha Developers
- Unitech Limited
- United Credit Belani Group
- Velankani Infrastructure



# Master Builders Solutions from BASF for the Construction Industry

**MasterAir®**

Complete solutions for air entrained concrete

**MasterBrace®**

Solutions for concrete strengthening

**MasterCast®**

Solutions for the manufactured concrete product industry

**MasterCem®**

Solutions for cement manufacture

**MasterEmaco®**

Solutions for concrete repair

**MasterFinish®**

Solutions for formwork treatment

**MasterFlow®**

Solutions for precision grouting

**MasterFiber®**

Comprehensive solutions for fiber reinforced concrete

**MasterGlenium®**

Solutions for hyperplasticized concrete

**MasterInject®**

Solutions for concrete injection

**MasterKure®**

Solutions for concrete curing

**MasterLife®**

Solutions for enhanced durability

**MasterMatrix®**

Advanced rheology control solutions for self-consolidating concrete

**MasterPel®**

Solutions for water tight concrete

**MasterPolyheed®**

Solutions for high performance concrete

**MasterPozzolith®**

Solutions for water-reduced concrete

**MasterProtect®**

Solutions for concrete protection

**MasterRheobuild®**

Solutions for superplasticized concrete

**MasterRoc®**

Solutions for underground construction

**MasterSeal®**

Solutions for waterproofing and sealing

**MasterSet®**

Solutions for retardation control

**MasterSure®**

Solutions for workability control

**MasterTop®**

Solutions for industrial and commercial floors.

**Master X-Seed®**

Advanced accelerator solutions for pre-cast concrete

**Ucrete®**

Flooring solutions for harsh environments

**INDIA**

BASF India Limited, Construction Chemicals Division,  
Plot No.12, TTC Area, Thane Belapur Road,  
Turbhe, 400 705 Navi Mumbai, India.  
Phone: +91 22 6712 7777 / 6712 7600  
Email: [construction-india@basf.com](mailto:construction-india@basf.com)

**PAKISTAN**

BASF Chemicals & Polymers Pakistan (Private) Ltd.,  
46-A, Block-6, 75400 Karachi, Pakistan  
Phone: +92 21 111 550 550 Fax: +92 21 3454-6311  
Email: [mohsin.zia@basf.com](mailto:mohsin.zia@basf.com)

**SRI LANKA**

BASF Lanka (Private) Limited,  
186, Vauxhall Street Colombo 2, Sri Lanka  
Phone: +94 11 2423388 / 2330948  
Fax: +94 11 2431400 / 4799222  
E-Mail: [harshanath.rathnayaka@basf.com](mailto:harshanath.rathnayaka@basf.com)

**BANGLADESH**

BASF Bangladesh Ltd,  
SAM Tower (Level 7), House # 4, Road # 22,  
Gulshan 1, Dhaka - 1212  
Phone: +88 02 9851981-5, Fax: +88 02 9851980  
Email: [fahima.shahadat@basf.com](mailto:fahima.shahadat@basf.com)